

SPECIFICATIONS

BETWEEN FRAMES: 10.375" - 51"

ROLLER CONSTRUCTION: 1.9" dia. x 16ga. wall, bare carbon steel, pickled & oiled.

SHEAVE: Carbon Steel, 8 Grooves (For two 4-Rib Belts)

BEARINGS: (A6151) Precision, grease packed, ABEC-1 with steel cup, 7/16" hex axle, front & back rubber seals, rated for - 4 °F to 150 °F. Other options available.

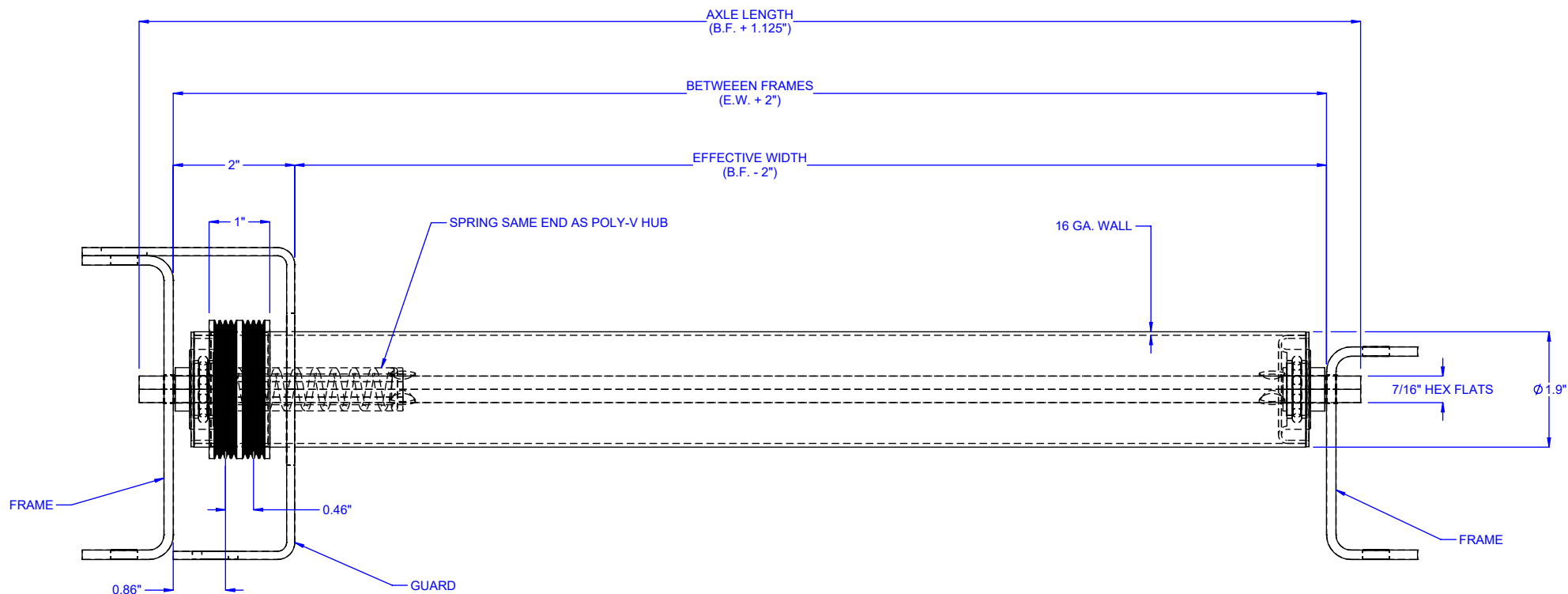
AXLE RETENTION: 3" long spring, one side. Optional cotter pins.

LOAD CAPACITY: 250 LBS. * Based on 51" B.F. with an evenly distributed load. Roller capacity may be limited to conveyor frame capacity.

ROLLER TUBE MATERIAL & COVER OPTIONS:

- (V98) *Standard* - Bare Carbon Steel, Pickled & Oiled
- (V71) Galvanized Steel
- (V80) Stainless Steel Tube & Axle
- (V97) Zinc Plated Carbon Steel
- (V41) Orange Polyurethane, 1/8" Thick (Carbon steel tube)
- (V10) Black UHMW ULTREX® Sleeves, 2-3/8" O.D. (Carbon steel tube)

NOTE: Axle & Sheave are carbon steel unless specified otherwise.



MODEL: R1916PLV-A6151

PART #: CV0040444-A6151

DESCRIPTION: SPROCKETED ROLLER, 1.9" DIA. X 16 GA. WALL

LEWCO, INC. IS COMMITTED TO CONTINUOUS IMPROVEMENT AND RESERVES THE RIGHT TO CHANGE DESIGNS AND SPECIFICATIONS WITHOUT NOTICE.

THIS DRAWING MUST NOT BE COPIED, REPRODUCED OR USED FOR ANY PURPOSE WITHOUT THE WRITTEN CONSENT OF LEWCO, INC. ALL RIGHTS RESERVED.



706 LANE ST. SANDUSKY, OH 44870, U.S.A.