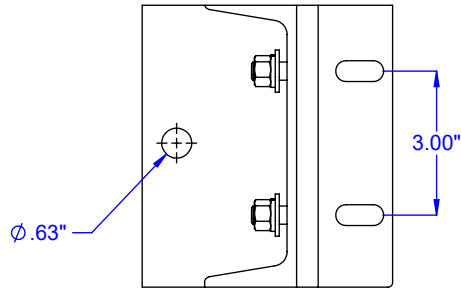
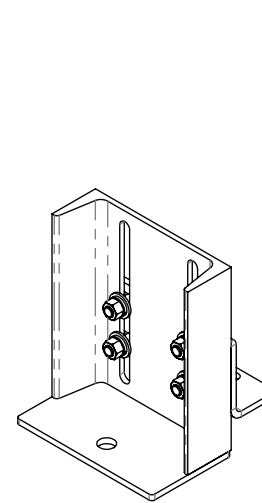


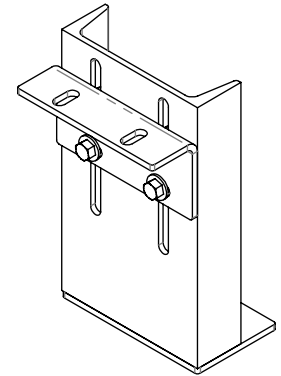
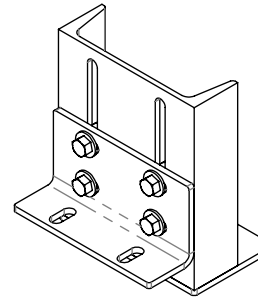
TOP VIEW  
CONDITION "A"



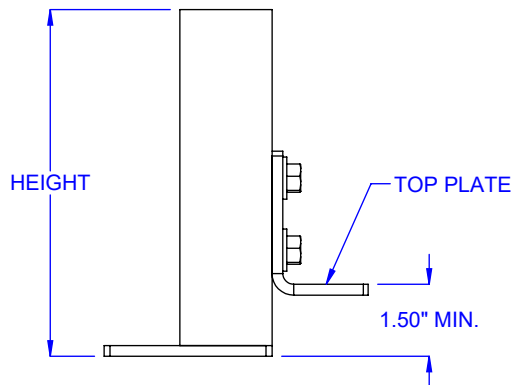
TOP VIEW  
CONDITION "B"



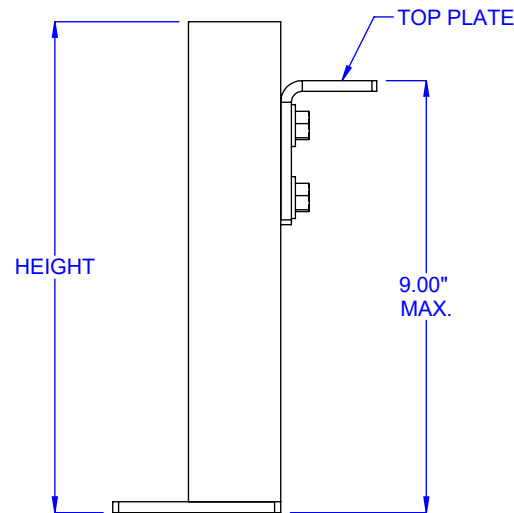
CONDITION "A"



CONDITION "B"



FRONT VIEW  
CONDITION "A"



FRONT VIEW  
CONDITION "B"

HEIGHT RANGE			
HEIGHT	CONDITION	MIN.	MAX.
7.25"	CONDITION "A"	1.50"	4.00"
7.25"	CONDITION "B"	4.00"	7.00"
10.25"	CONDITION "B"	7.00"	9.00"

**CONSTRUCTION:** C6x8.2# Structural Channel with 4 ga. Top & Bottom Plate

**LOAD CAPACITY:** UP TO 1500 LBS. MAXIMUM LOAD PER SUPPORT

MODEL: SPSL6

DESCRIPTION: SUPPORT, 6" STRUCTURAL LOW ELEVATION