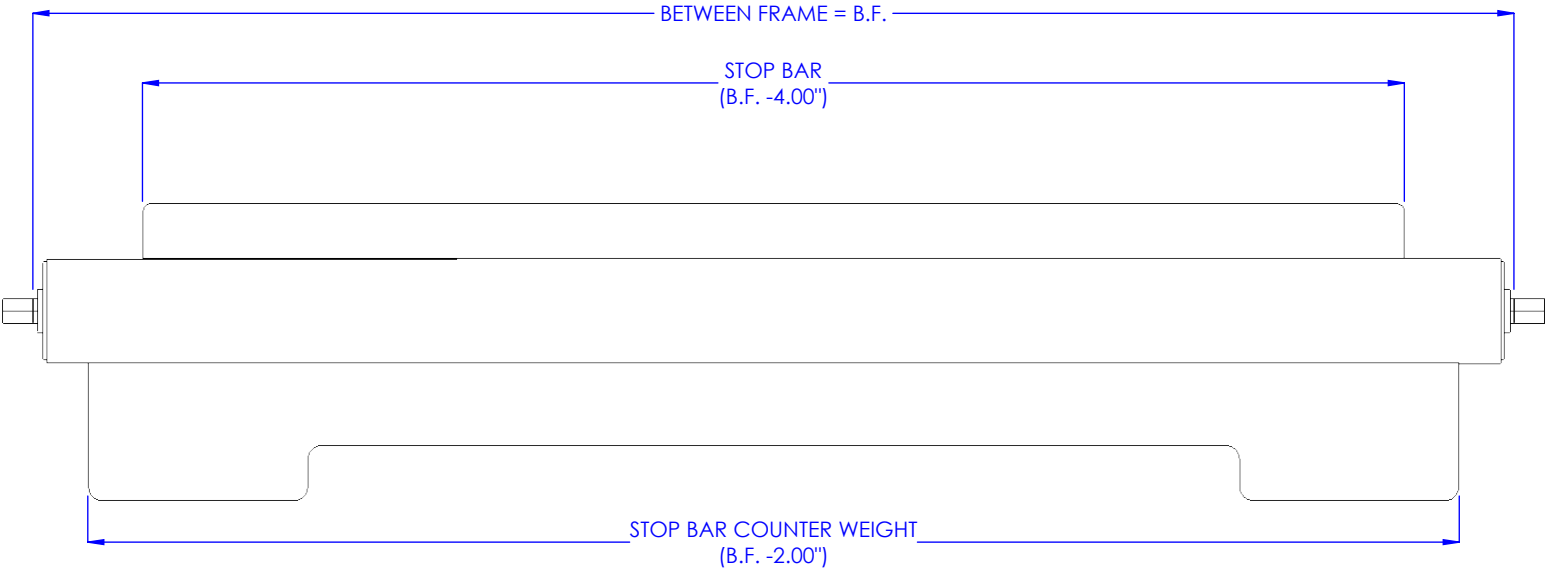
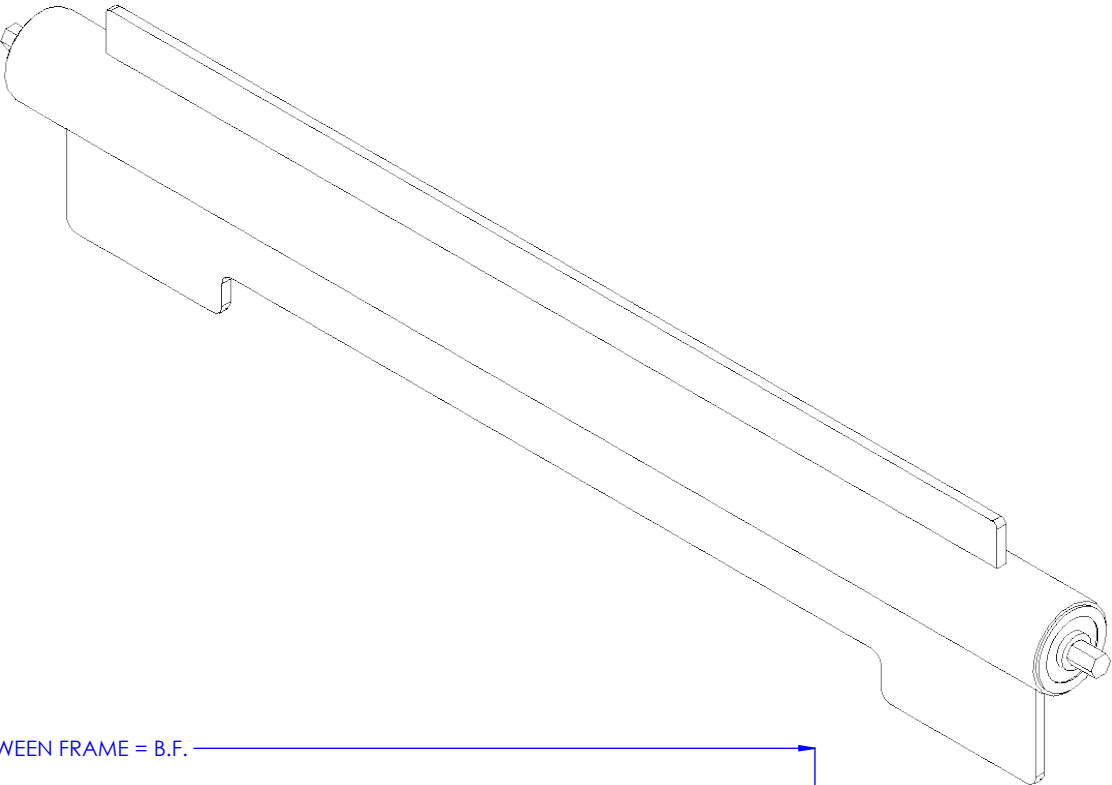


SPECIFICATIONS

PRODUCT LINE:	MINIMUM ROLLER CENTER SPACING REQUIRED FOR ANTI-BACK ROLLER INSTALLATION
1900 SERIES CONVEYORS	3"
2500 SERIES CONVEYORS	4"
2600 SERIES CONVEYORS	4"
3500 SERIES CONVEYORS	7"

**INSTALLING ANTI-BACK UP ROLLER INTO AN EXISTING FRAME:**  
THE ROLLER CENTERS DIRECTLY ADJACENT TO THE ANTI-BACK UP ROLLER WILL BE AT LEAST, 2X THE MINIMUM ROLLER SPACING SPECIFIED IN THE CHART. THE APPLIED LOAD SURFACE MUST BE CAPABLE OF TRANSVERSING THE OPEN SPAN CREATED BY THE ANTI-BACKUP ROLLER INSTALLATION. OPTIONAL INSTALLATION COMPONENTS AND STOPPER BRACKETS ARE SHOWN ON PAGES 2 & 3.

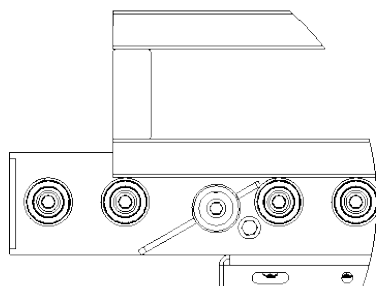
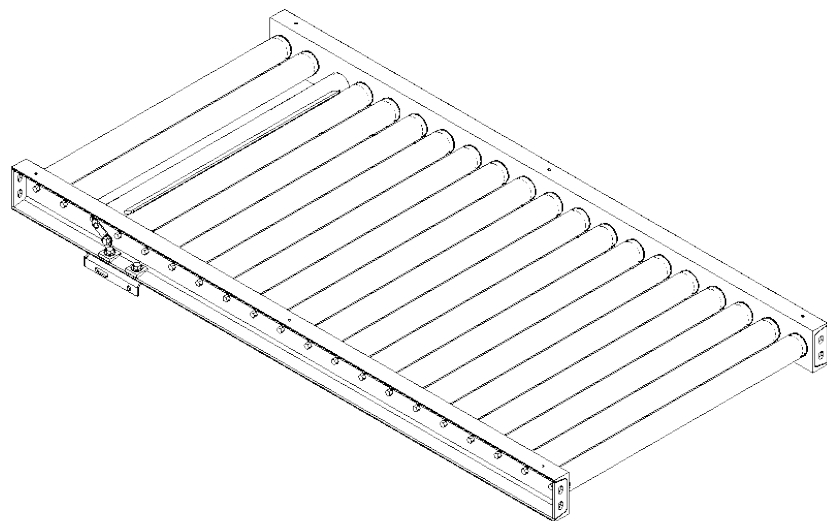
CONSULT SALES DEPARTMENT FOR ADDITIONAL DETAILS.



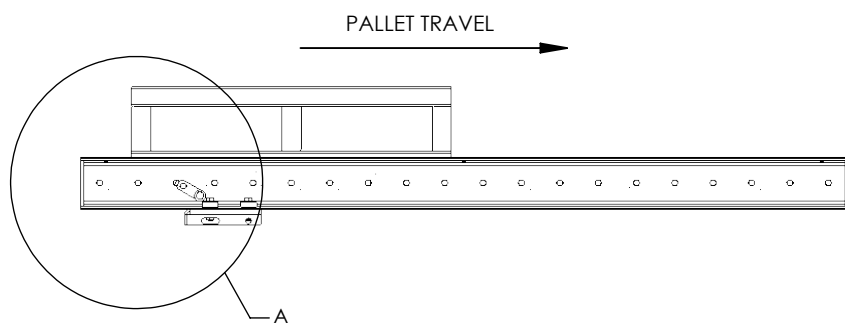
MODEL: CV0148199-\*

DESCRIPTION: ANTI-BACKUP ROLLER

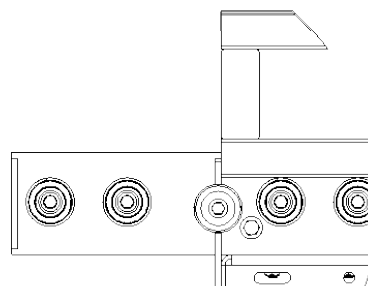
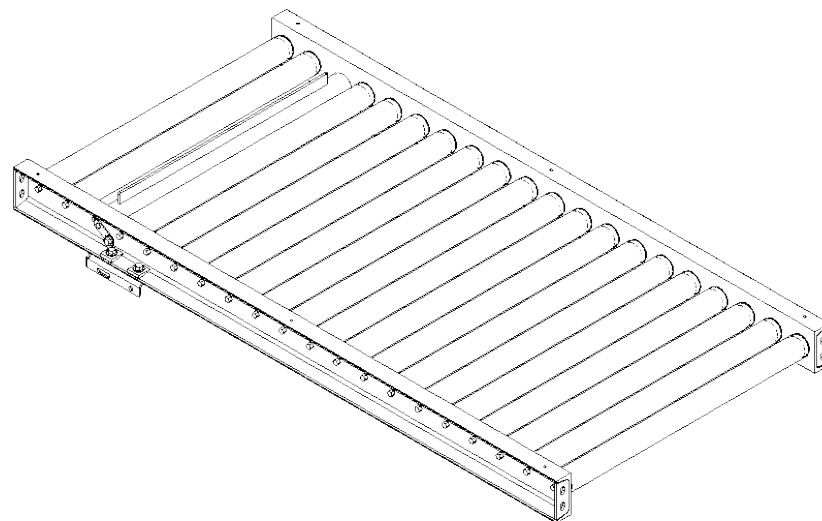
**ANTI-BACK UP STOP LOWERED**  
**-PALLET HIDDEN FOR CLARITY IN ISO VIEW**



DETAIL A  
 SCALE 2 : 15  
 SOME COMPONENTS ARE HIDDEN FOR CLARITY

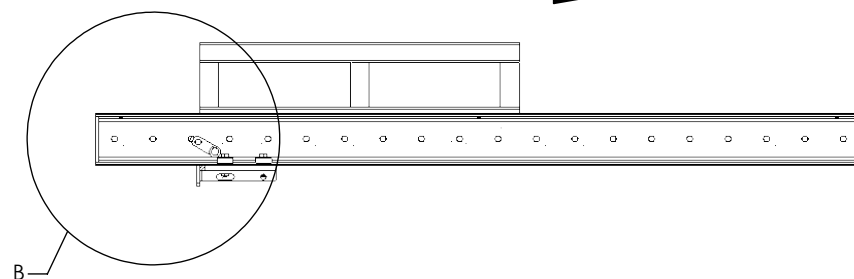


**ANTI-BACK UP STOP RAISED**  
**-PALLET HIDDEN FOR CLARITY IN ISO VIEW**



DETAIL B  
 SCALE 2 : 15  
 SOME COMPONENTS ARE HIDDEN FOR CLARITY

ANTI-BACK UP ROLLER CAN ONLY TRAVEL IN FOWARD DIRECTION.  
 REVERSE TRAVEL IS MECHANICALLY BLOCKED BY BRACKETS MOUNTED BELOW THE ROLLERS

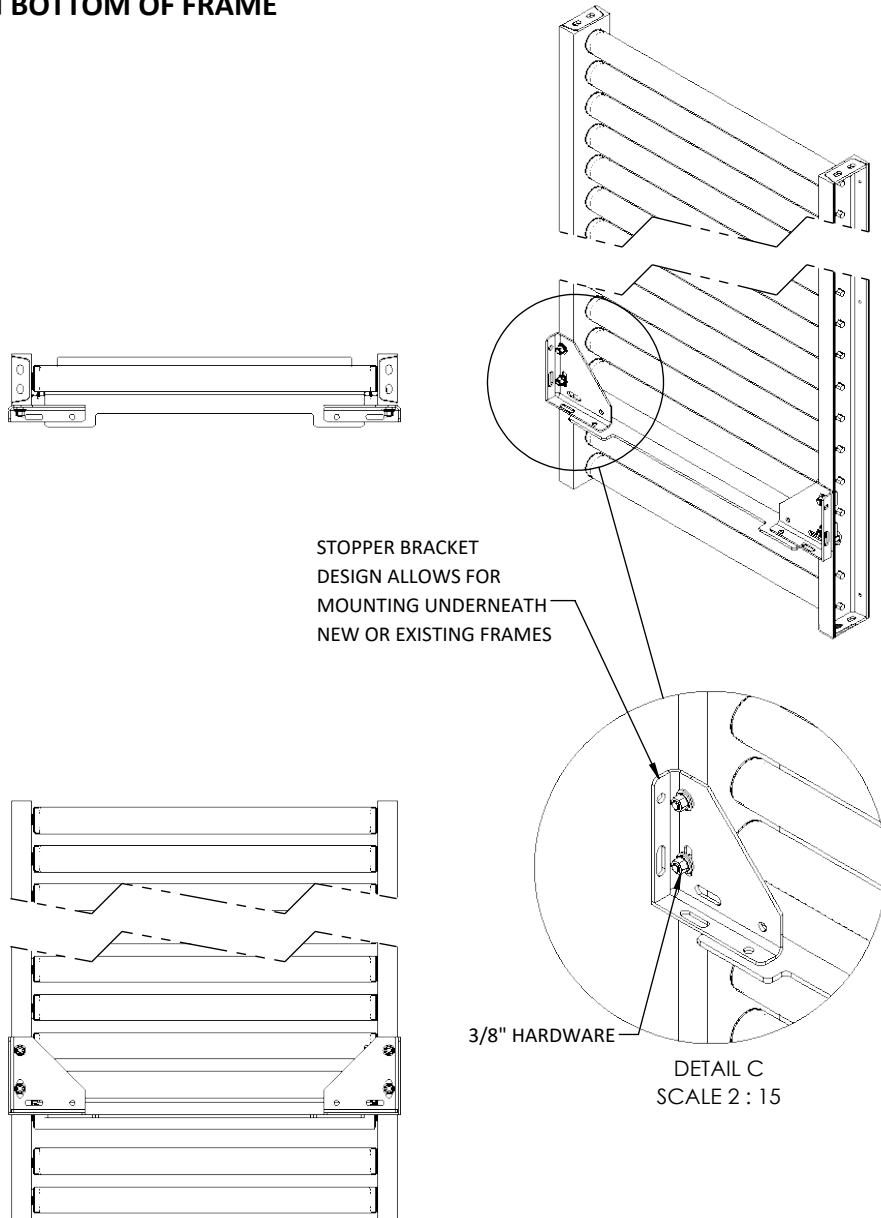


**MODEL:** CV0148199-\*

**DESCRIPTION:** ANTI-BACKUP ROLLER

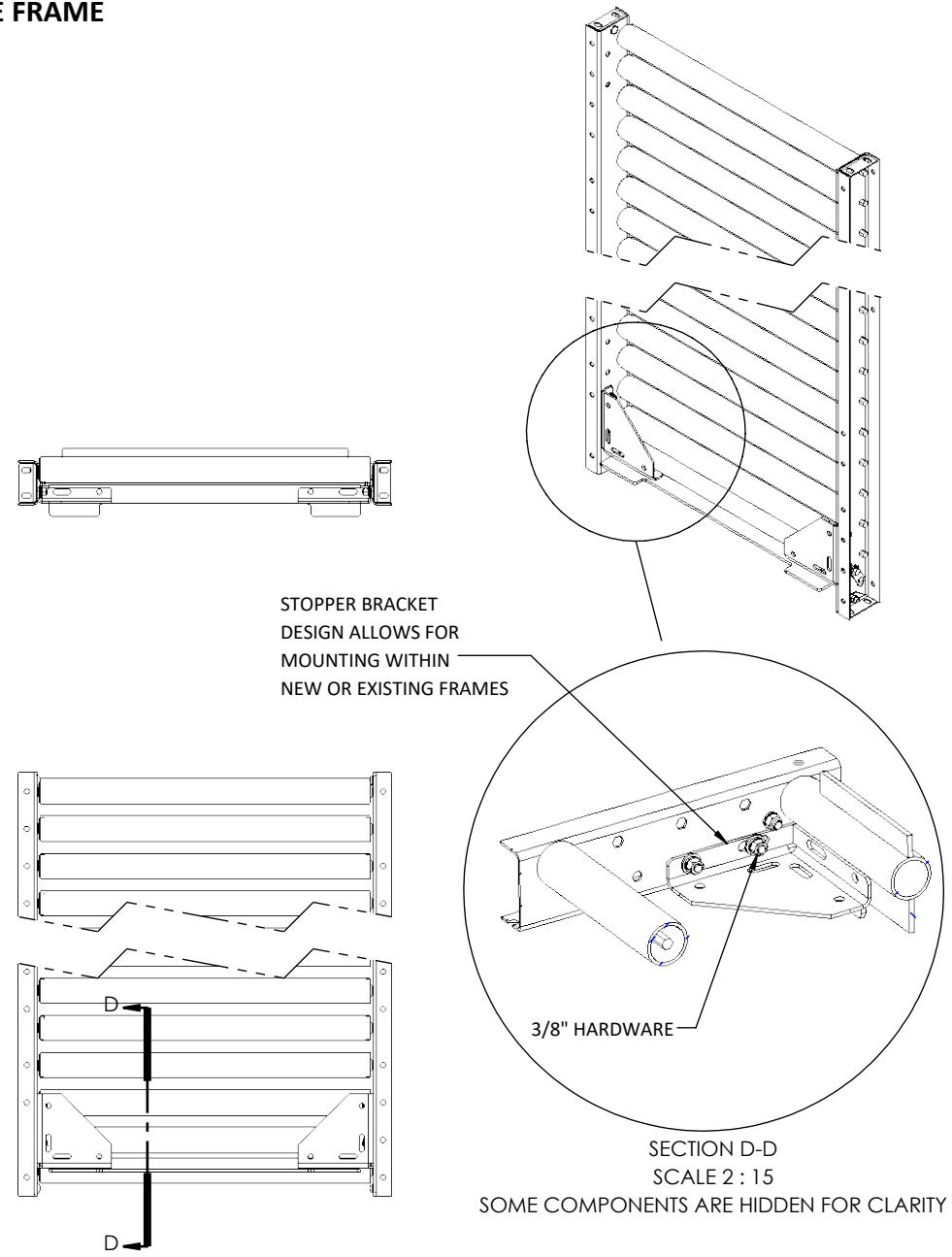
## OPTION A:

### STOPPER BRACKET MOUNTED ON BOTTOM OF FRAME



## OPTION B:

### STOPPER BRACKET MOUNTED INSIDE FRAME



MODEL: CV0148199-\*

DESCRIPTION: ANTI-BACKUP ROLLER

LEWCO, INC. IS COMMITTED TO CONTINUOUS  
IMPROVEMENT AND RESERVES THE RIGHT TO CHANGE  
DESIGNS AND SPECIFICATIONS WITHOUT NOTICE.

THIS DRAWING MUST NOT BE COPIED, REPRODUCED OR  
USED FOR ANY PURPOSE WITHOUT THE WRITTEN  
CONSENT OF LEWCO, INC. ALL RIGHTS RESERVED.

**LEWCO**

706 LANE ST. SANDUSKY, OH 44870, U.S.A.