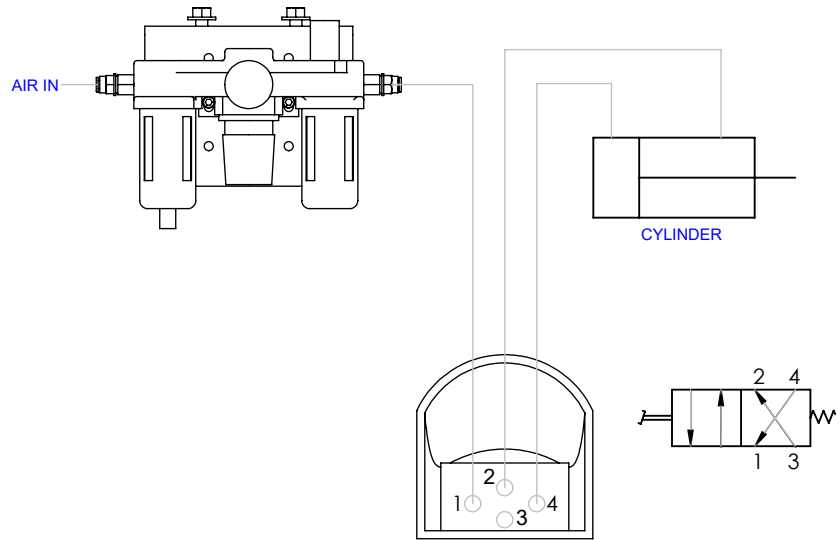


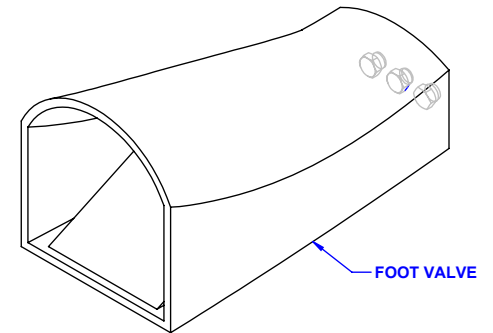
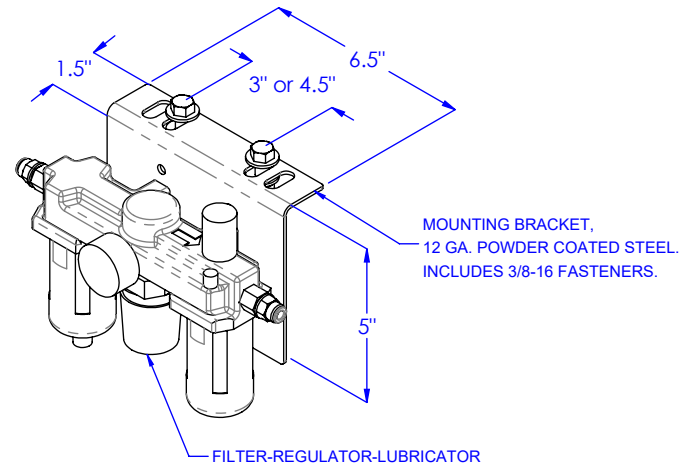
VS2 SCHEMATIC

OPERATION: Press foot pedal for pressure (Pedal will stay in position).
Press foot pedal again to exhaust pressure (Pedal will release).



VS3 SCHEMATIC

OPERATION: Press & hold foot pedal for pressure.
Release foot pedal to exhaust pressure.



SPECIFICATIONS

VALVE: Foot operated valve has 1/4" NPT ports, 2-position, 4-way with detent pedal (model VS2, Part # PR0002179) or spring return pedal (model VS3, Part # PCP3897) . Pedal features a plastic foot guard. Metal foot guard also available.

FILTER, REGULATOR, LUBRICATOR (FRL) with 3/8" ports. Includes fittings.
Part #: PCP4616

TUBING: Includes 20 Ft. of orange & 20 Ft. of blue 1/4" polyurethane tubing.

AIR REQUIREMENTS: 80 PSI minimum pressure to 115 PSI maximum pressure.

NOTE: System pressure loss can occur over extended periods with no use.

MODEL: VS2 OR VS3

DESCRIPTION: PNEUMATIC FOOT VALVE, 1/4" NPT, 20' HOSE

LEWCO, INC. IS COMMITTED TO CONTINUOUS
IMPROVEMENT AND RESERVES THE RIGHT TO CHANGE
DESIGNS AND SPECIFICATIONS WITHOUT NOTICE.

THIS DRAWING MUST NOT BE COPIED, REPRODUCED
OR USED FOR ANY PURPOSE WITHOUT THE WRITTEN
CONSENT OF LEWCO, INC. ALL RIGHTS RESERVED.

LEWCO

706 LANE ST. SANDUSKY, OH 44870, U.S.A.