

LOAD CAPACITY @ 60 FPM (LBS)								
HP	3" ROLLER CENTERS				6" ROLLER CENTERS			
	24" BF		48" BF		24" BF		48" BF	
	40' LG	80' LG	40' LG	80' LG	40' LG	80' LG	40' LG	80' LG
3/4	-	-	-	-	50	-	-	-
1	150	-	-	-	750	100	250	-
1-1/2	850	-	-	-	1450	800	1000	-

LOAD CAPACITY @ 30 FPM (LBS)								
HP	3" ROLLER CENTERS				6" ROLLER CENTERS			
	24" BF		48" BF		24" BF		48" BF	
	40' LG	80' LG	40' LG	80' LG	40' LG	80' LG	40' LG	80' LG
3/4	850	-	-	-	1450	800	1000	-
1	1550	300	600	-	2200	1500	1700	550
1-1/2	2500	1200	1550	-	3100	2450	2650	1500

MAXIMUM UNIT LOAD PER LINEAR FOOT OF CONVEYOR IS 1000 LBS - NOT TO EXCEED CAPACITY ABOVE

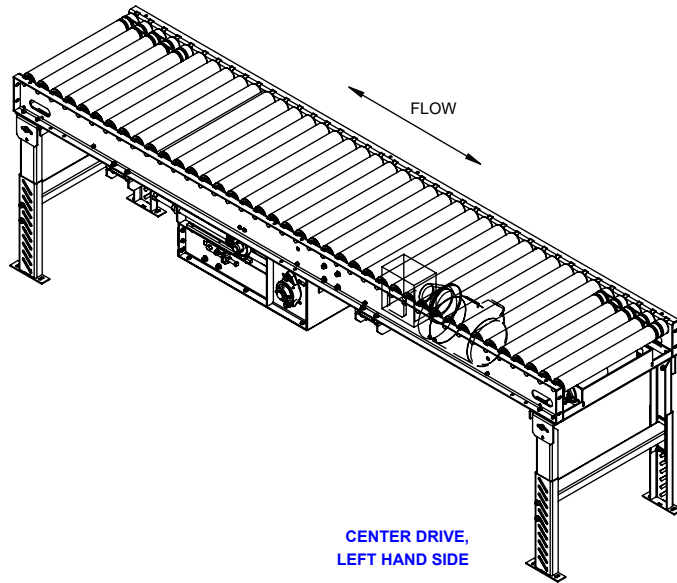
*** HP requirements will vary for different drive options, belts, conveyor width, length, roller center, speed and application. Consult factory.**

MODEL: BDLR26
DESCRIPTION: BELT DRIVEN LIVE ROLLER CONVEYOR

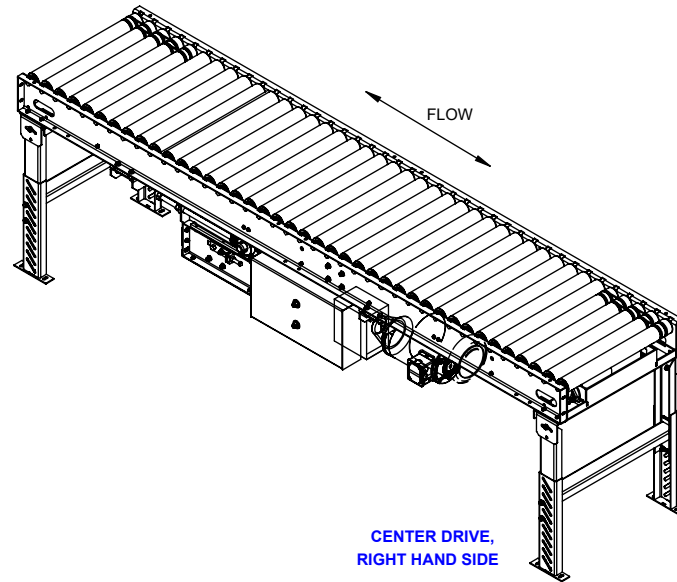
LEWCO, INC. IS COMMITTED TO CONTINUOUS IMPROVEMENT AND RESERVES THE RIGHT TO CHANGE DESIGNS AND SPECIFICATIONS WITHOUT NOTICE.

THIS DRAWING MUST NOT BE COPIED, REPRODUCED OR USED FOR ANY PURPOSE WITHOUT THE WRITTEN CONSENT OF LEWCO, INC. ALL RIGHTS RESERVED.

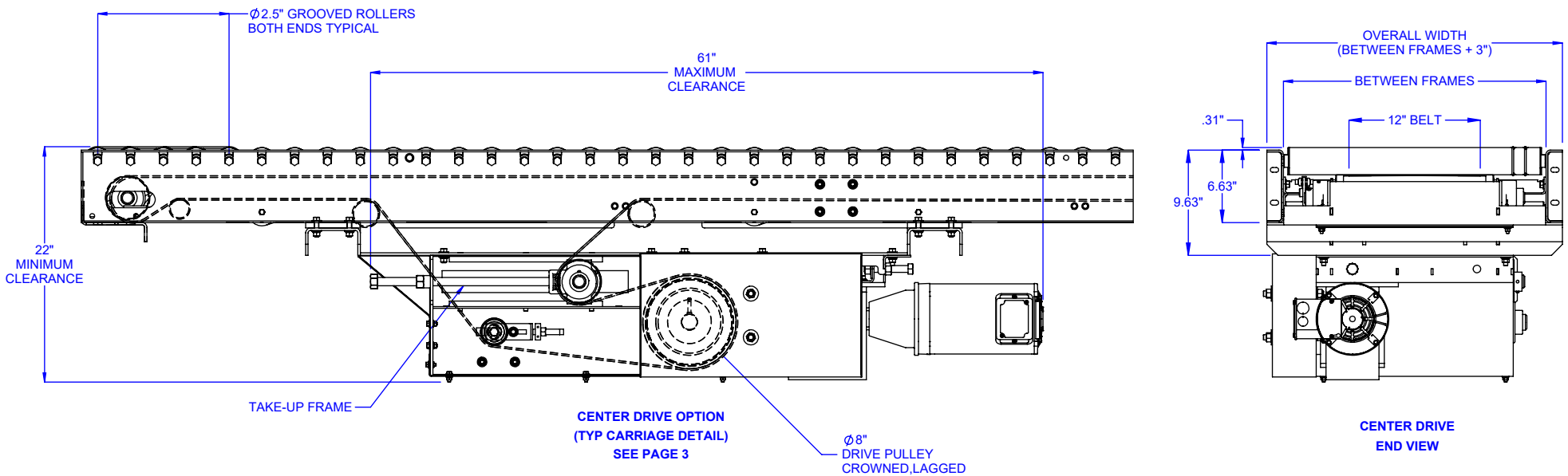




CENTER DRIVE,
LEFT HAND SIDE



CENTER DRIVE,
RIGHT HAND SIDE



MODEL: BDLR26

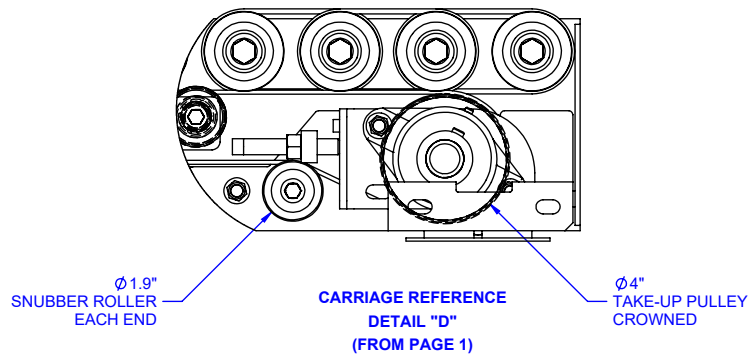
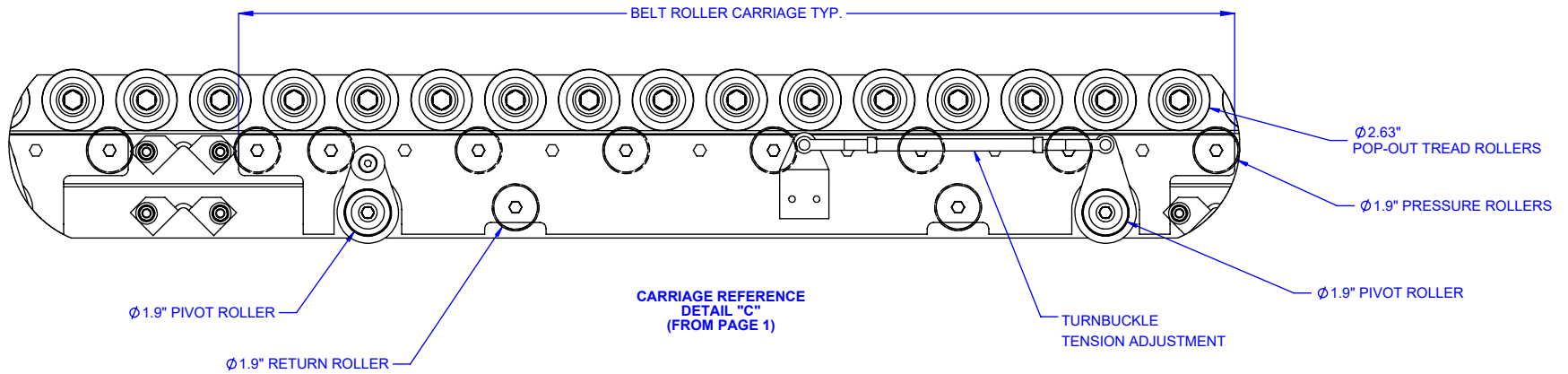
DESCRIPTION: BELT DRIVEN LIVE ROLLER CONVEYOR

LEWCO, INC. IS COMMITTED TO CONTINUOUS
IMPROVEMENT AND RESERVES THE RIGHT TO CHANGE
DESIGNS AND SPECIFICATIONS WITHOUT NOTICE.

THIS DRAWING MUST NOT BE COPIED, REPRODUCED
OR USED FOR ANY PURPOSE WITHOUT THE WRITTEN
CONSENT OF LEWCO, INC. ALL RIGHTS RESERVED.



706 LANE ST. SANDUSKY, OH 44870, U.S.A.



MODEL: BDLR26

DESCRIPTION: BELT DRIVEN LIVE ROLLER CONVEYOR

LEWCO, INC. IS COMMITTED TO CONTINUOUS IMPROVEMENT AND RESERVES THE RIGHT TO CHANGE DESIGNS AND SPECIFICATIONS WITHOUT NOTICE.

THIS DRAWING MUST NOT BE COPIED, REPRODUCED OR USED FOR ANY PURPOSE WITHOUT THE WRITTEN CONSENT OF LEWCO, INC. ALL RIGHTS RESERVED.



706 LANE ST. SANDUSKY, OH 44870, U.S.A.