

| LOAD CAPACITY @ 60 FPM (LBS) |                   |        |        |        |                   |        |        |        |
|------------------------------|-------------------|--------|--------|--------|-------------------|--------|--------|--------|
| HP                           | 3" ROLLER CENTERS |        |        |        | 6" ROLLER CENTERS |        |        |        |
|                              | 24" BF            |        | 48" BF |        | 24" BF            |        | 48" BF |        |
|                              | 40' LG            | 80' LG | 40' LG | 80' LG | 40' LG            | 80' LG | 40' LG | 80' LG |
| 3/4                          | -                 | -      | -      | -      | 50                | -      | -      | -      |
| 1                            | 150               | -      | -      | -      | 750               | 100    | 250    | -      |
| 1-1/2                        | 850               | -      | -      | -      | 1450              | 800    | 1000   | -      |

| LOAD CAPACITY @ 30 FPM (LBS) |                   |        |        |        |                   |        |        |        |
|------------------------------|-------------------|--------|--------|--------|-------------------|--------|--------|--------|
| HP                           | 3" ROLLER CENTERS |        |        |        | 6" ROLLER CENTERS |        |        |        |
|                              | 24" BF            |        | 48" BF |        | 24" BF            |        | 48" BF |        |
|                              | 40' LG            | 80' LG | 40' LG | 80' LG | 40' LG            | 80' LG | 40' LG | 80' LG |
| 3/4                          | 850               | -      | -      | -      | 1450              | 800    | 1000   | -      |
| 1                            | 1550              | 300    | 600    | -      | 2200              | 1500   | 1700   | 550    |
| 1-1/2                        | 2500              | 1200   | 1550   | -      | 3100              | 2450   | 2650   | 1500   |

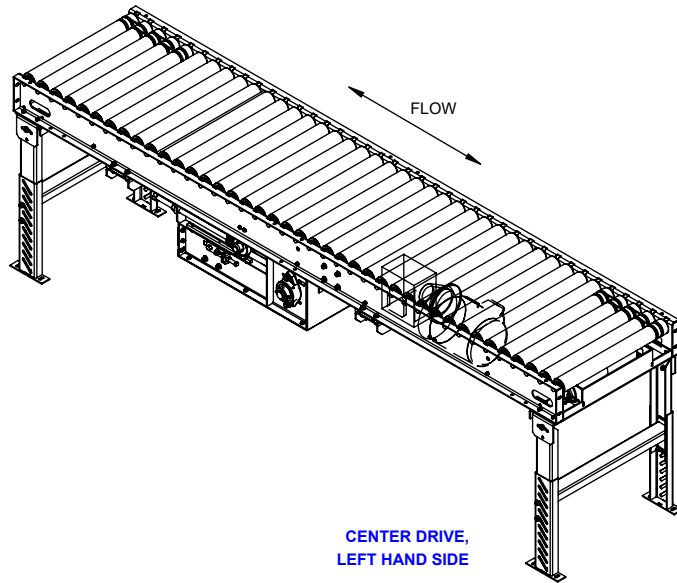
MAXIMUM UNIT LOAD PER LINEAR FOOT OF CONVEYOR IS 1000 LBS  
 - NOT TO EXCEED CAPACITY ABOVE

\* HP requirements will vary for different drive options, belts, conveyor width, length, roller center, speed and application. Consult factory.

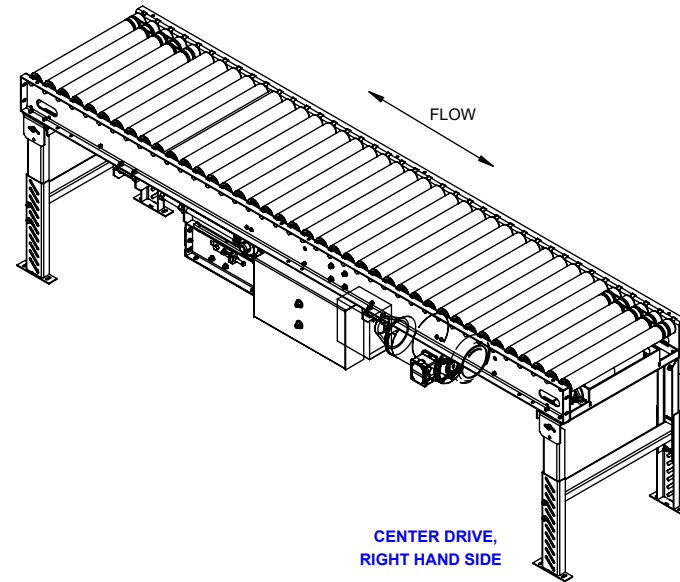
MODEL: BDLR25  
 DESCRIPTION: BELT DRIVEN LIVE ROLLER CONVEYOR

LEWCO, INC. IS COMMITTED TO CONTINUOUS IMPROVEMENT AND RESERVES THE RIGHT TO CHANGE DESIGNS AND SPECIFICATIONS WITHOUT NOTICE.  
 THIS DRAWING MUST NOT BE COPIED, REPRODUCED OR USED FOR ANY PURPOSE WITHOUT THE WRITTEN CONSENT OF LEWCO, INC. ALL RIGHTS RESERVED.

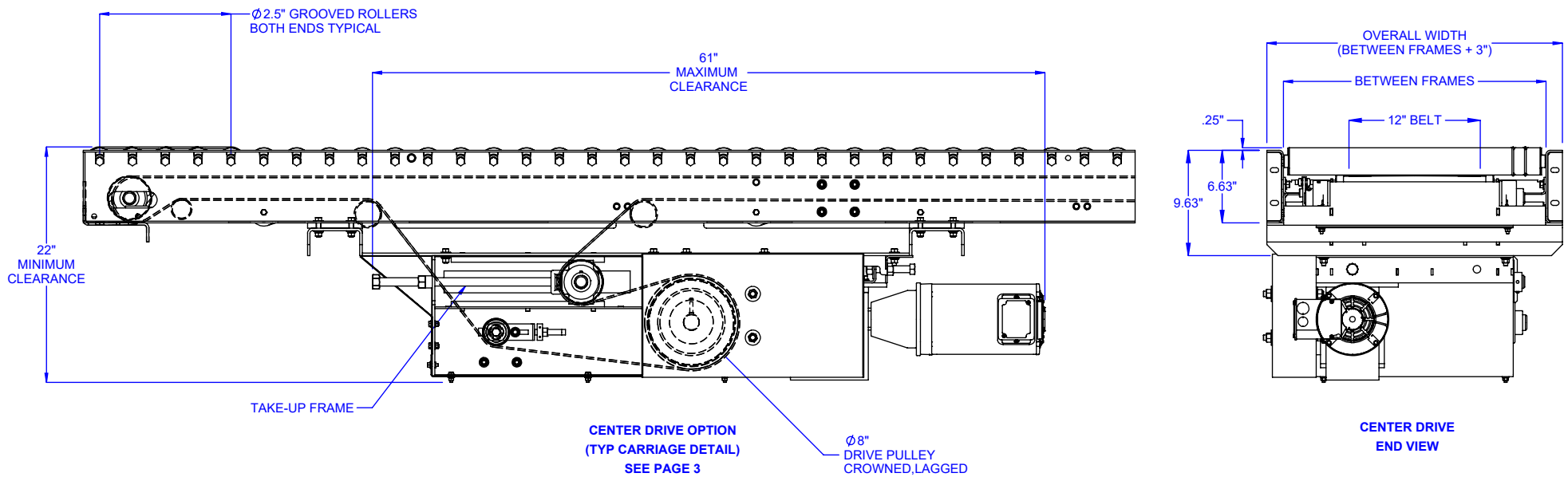




CENTER DRIVE,  
LEFT HAND SIDE



CENTER DRIVE,  
RIGHT HAND SIDE



MODEL: BDLR25

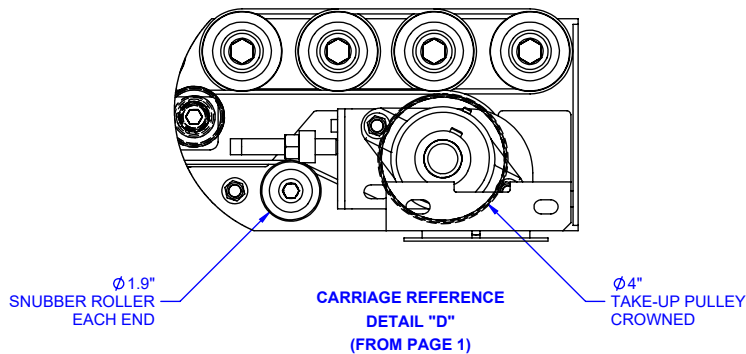
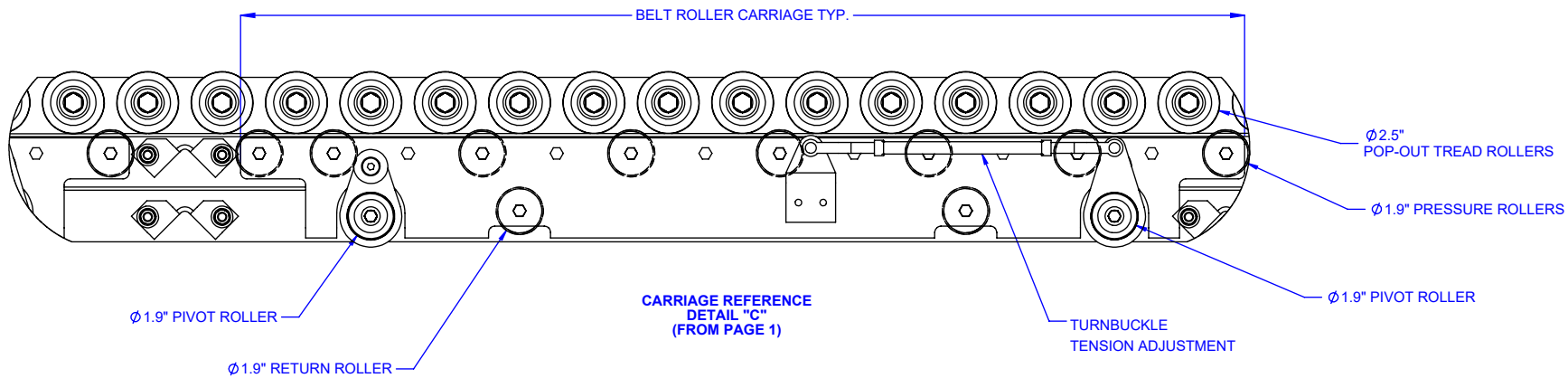
DESCRIPTION: BELT DRIVEN LIVE ROLLER CONVEYOR

LEWCO, INC. IS COMMITTED TO CONTINUOUS  
IMPROVEMENT AND RESERVES THE RIGHT TO CHANGE  
DESIGNS AND SPECIFICATIONS WITHOUT NOTICE.

THIS DRAWING MUST NOT BE COPIED, REPRODUCED  
OR USED FOR ANY PURPOSE WITHOUT THE WRITTEN  
CONSENT OF LEWCO, INC. ALL RIGHTS RESERVED.

**LEWCO**

706 LANE ST. SANDUSKY, OH 44870, U.S.A.



MODEL: BDLR25

DESCRIPTION: BELT DRIVEN LIVE ROLLER CONVEYOR

LEWCO, INC. IS COMMITTED TO CONTINUOUS IMPROVEMENT AND RESERVES THE RIGHT TO CHANGE DESIGNS AND SPECIFICATIONS WITHOUT NOTICE.

THIS DRAWING MUST NOT BE COPIED, REPRODUCED OR USED FOR ANY PURPOSE WITHOUT THE WRITTEN CONSENT OF LEWCO, INC. ALL RIGHTS RESERVED.

**LEWCO**

706 LANE ST. SANDUSKY, OH 44870, U.S.A.