

Model: MSCCH

## Heavy-Duty Multi-Strand Chain Conveyor

Drag Chain Conveyor is ideal for moving products that wouldn't normally convey on rollers, such as pallets oriented the "hard-way", automotive frames, steel tubes, etc. It's also a great solution for heavier loads. Further, drag chain conveyors provide versatility in production lines because they can easily be integrated into systems with chain driven live roller (CDLR) and chain transfers. Their rugged design is suitable for harsh environments due to the low number of moving components and limited amount of maintenance required.

### Chain Centers

- 15" to 60"

### Number of Strands

- 2, 3, or 4

### Length

- 48" to 600"

### Conveyor Chain

- C80 chain guided by steel track.
- Optional:
  - UHMW track
  - Chain attachments
  - Non-marring chain or pads

### Drive Location

- End drive mounted between strands, right or left
- Optional:
  - End drive mounted on side, right or left
  - Center drive mounted between strands, right or left (standard for conveyors with reverse)

### Frame Construction

- 4 ga. steel formed & welded

### Motor

- 3/4 HP to 3 HP
- Totally Enclosed Fan Cooled motor
- Optional:
  - Inverter Duty motor
  - Power Off Brake motor
- Voltage: 230/460/ 3Ph/ 60hz
- Optional:
  - 115V/ 1Ph/ 60Hz
  - 208V/ 1Ph/ 60Hz
  - 230V/ 1Ph/ 60Hz
  - 575V/ 3Ph/ 60Hz

### Chain Speed

- 10 to 60 FPM (feet per minute)
- Reverse capability optional

### Control Options

- Variable Speed Controller
- Combination motor starter with disconnect, fixed speed
- Combination motor starter with disconnect, variable speed
- PLC with HMI
- No controls (provided by others)

### Conveyor Color

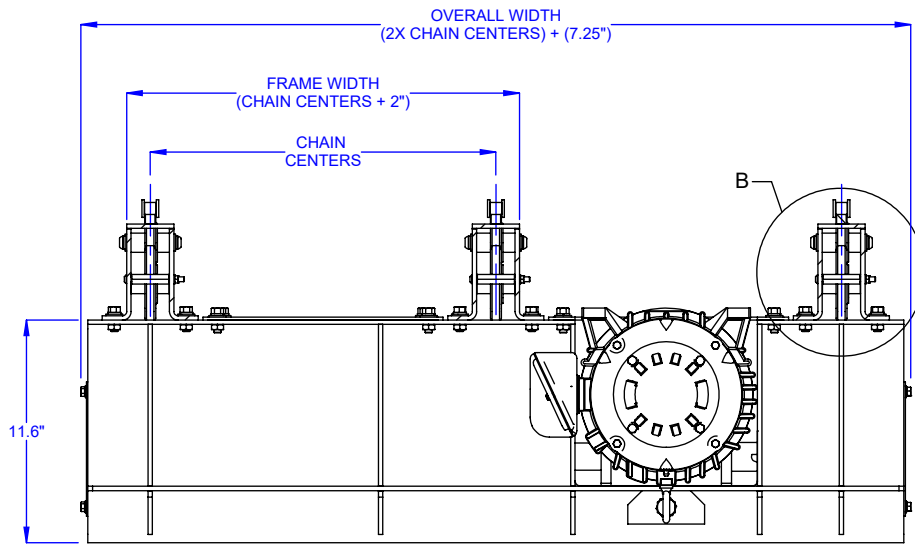
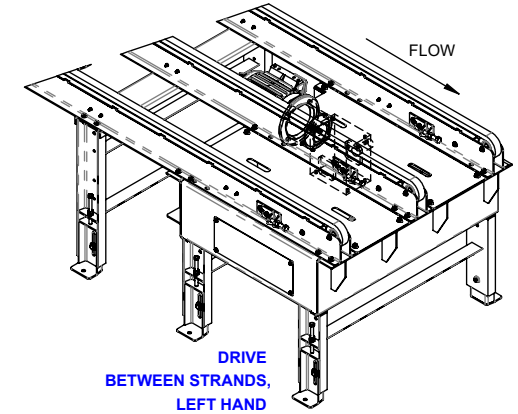
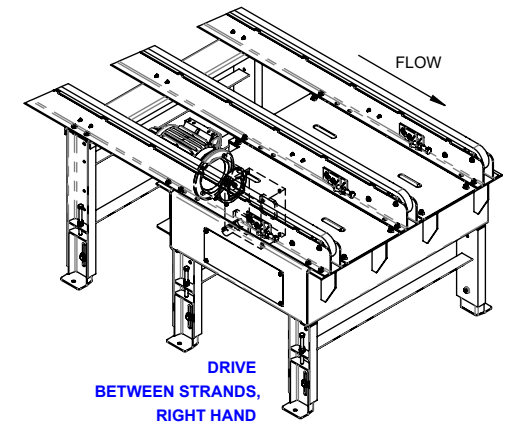
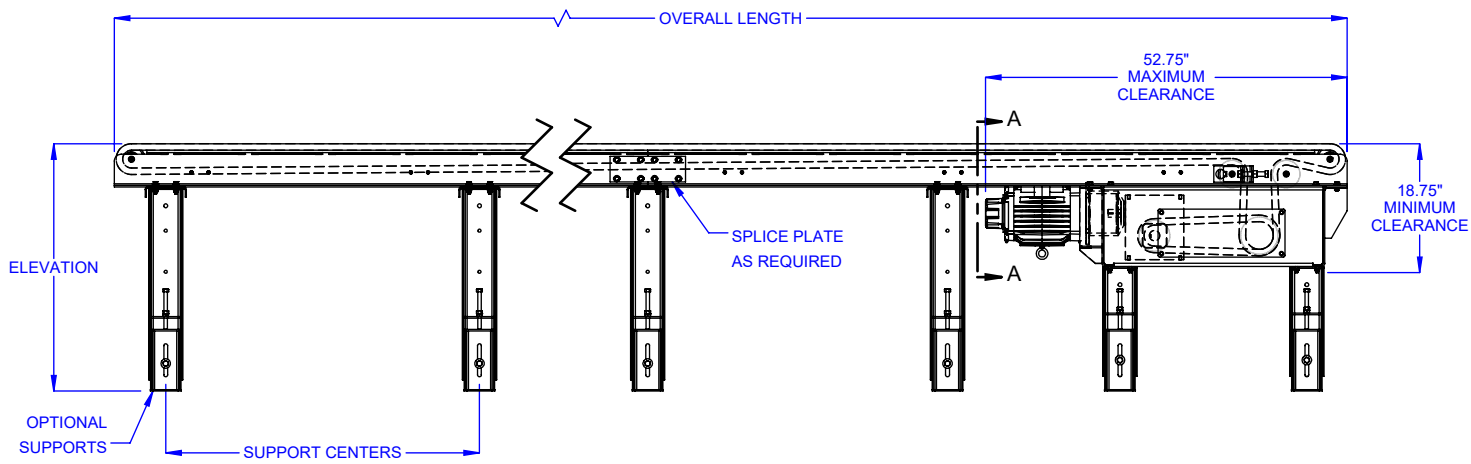
- Blue (RAL 5017)
- Guards are yellow (RAL 1023)
- Moving parts are bright red orange (RAL 2008).
- Optional:
  - Light Gray (RAL 7035)
  - Repose Gray (not an RAL)
  - Patina Green (RAL 6000)
  - Signal White (RAL 9003)
  - Jet Black (RAL 9005)
  - Flat Black (not an RAL)
  - Custom colors available

### Additional Options

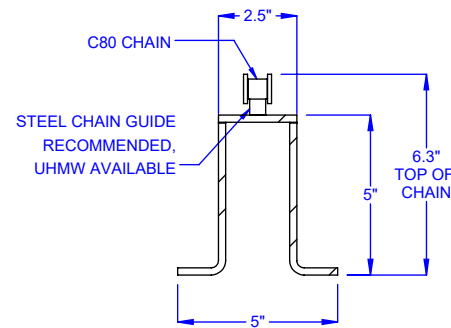
- Conveyor Supports, jack bolt style
- Guardrail
- Filler plates between strands
- Photo Eye Sensor(s)
- Custom sizes and features available. Please consult a LEWCO Applications Engineer for more information.

### Quality Assurance

- Each unit comes complete with a (1) year warranty and is tested prior to shipment.
- Manufactured under ISO 9001 Quality Certified System.



SECTION A-A  
DRIVE, BETWEEN STRANDS



DETAIL B

| HP Requirement Based on 3-Strands |                                                       |
|-----------------------------------|-------------------------------------------------------|
| HP                                | LOAD CAPACITY @ 60 FPM (LBS)<br>20 FT LENGTH CONVEYOR |
| 3/4                               | 1200                                                  |
| 1                                 | 1650                                                  |
| 1 1/2                             | 2550                                                  |
| 2                                 | 3500                                                  |
| 3                                 | 5200                                                  |
| HP                                | LOAD CAPACITY @ 30 FPM (LBS)<br>20 FT LENGTH CONVEYOR |
| 3/4                               | 2600                                                  |
| 1                                 | 3500                                                  |
| 1 1/2                             | 5300                                                  |
| 2                                 | 7100                                                  |
| 3                                 | 10650                                                 |

MAXIMUM UNIT LOAD PER PALLET IS 3000 LBS - NOT TO EXCEED CAPACITY ABOVE

\* HP requirements will vary for different conveyor lengths, chain track material and chain lubrication condition. Consult factory.

MODEL: MSCCH

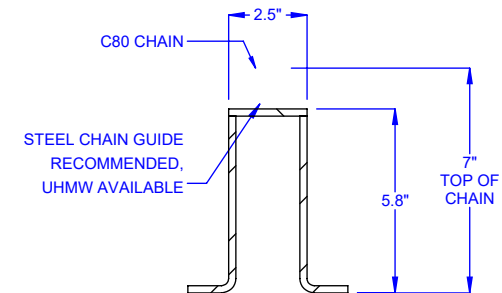
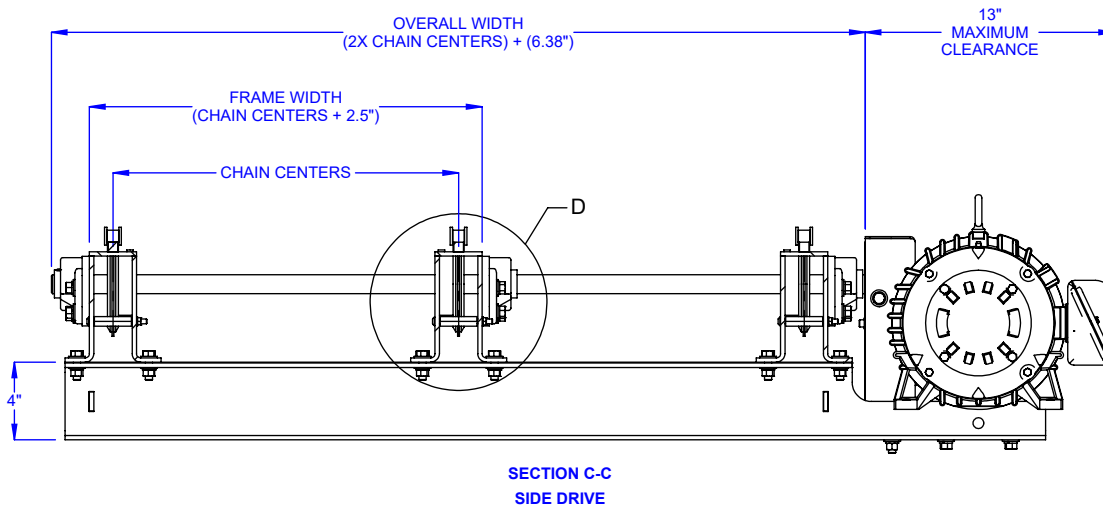
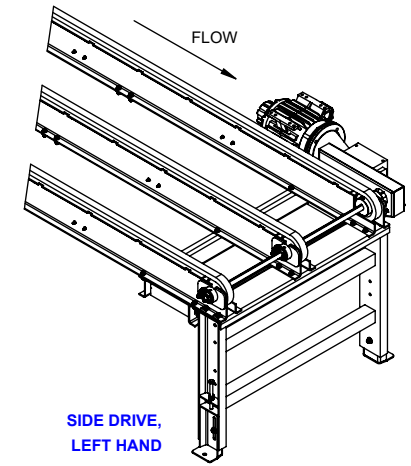
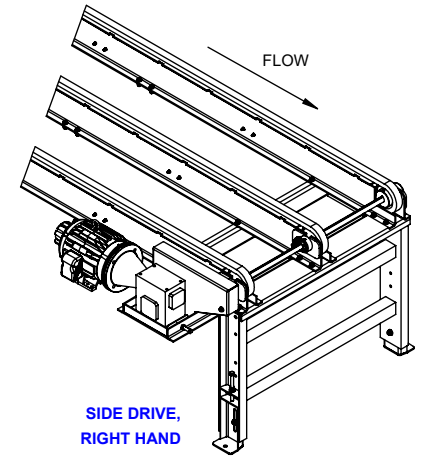
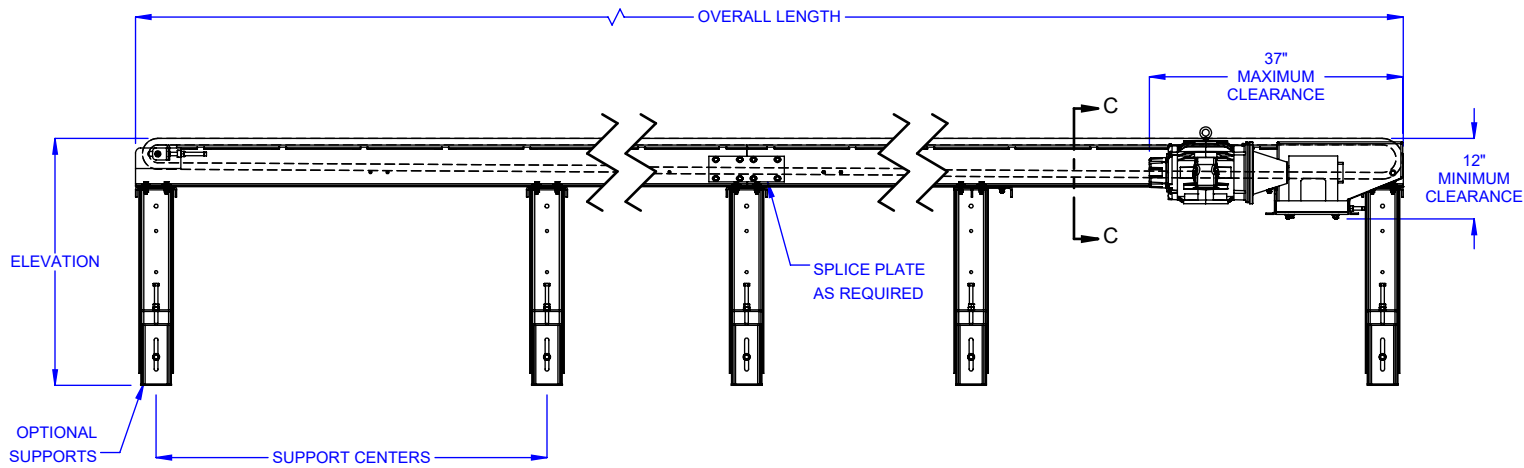
DESCRIPTION: MULTI STRAND CHAIN CONVEYOR, HEAVY DUTY

LEWCO, INC. IS COMMITTED TO CONTINUOUS IMPROVEMENT AND RESERVES THE RIGHT TO CHANGE DESIGNS AND SPECIFICATIONS WITHOUT NOTICE.

THIS DRAWING MUST NOT BE COPIED, REPRODUCED OR USED FOR ANY PURPOSE WITHOUT THE WRITTEN CONSENT OF LEWCO, INC. ALL RIGHTS RESERVED.

**LEWCO**

706 LANE ST. SANDUSKY, OH 44870, U.S.A.



DETAIL D

MODEL: MSCCH

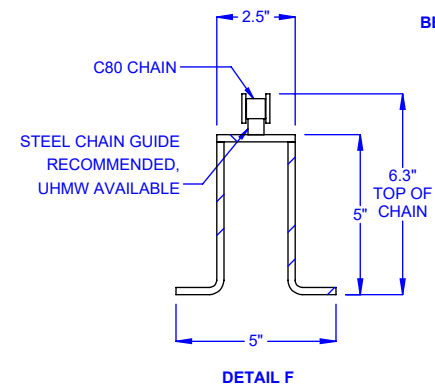
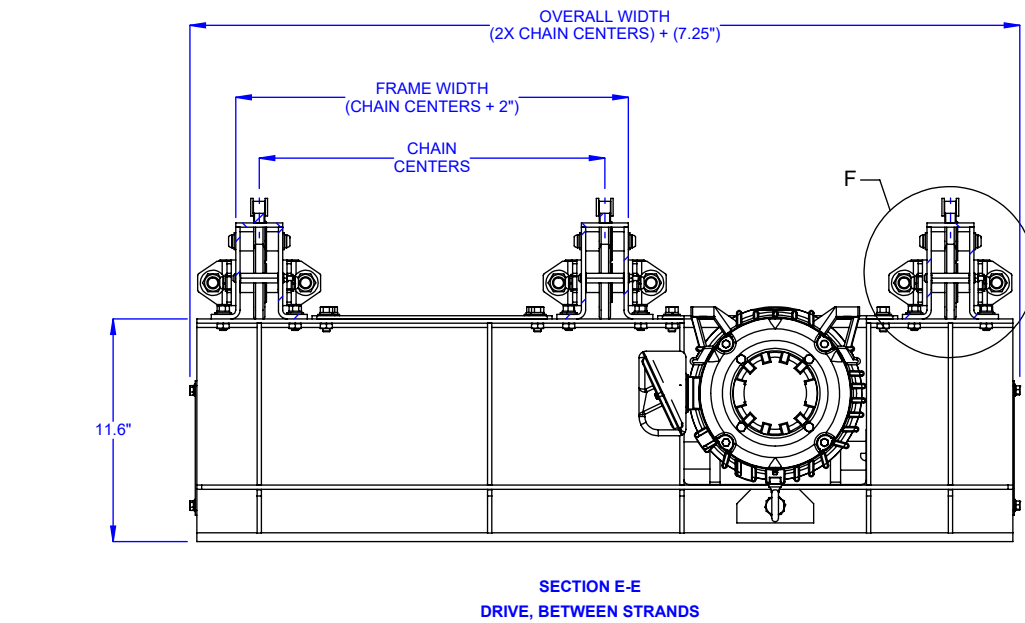
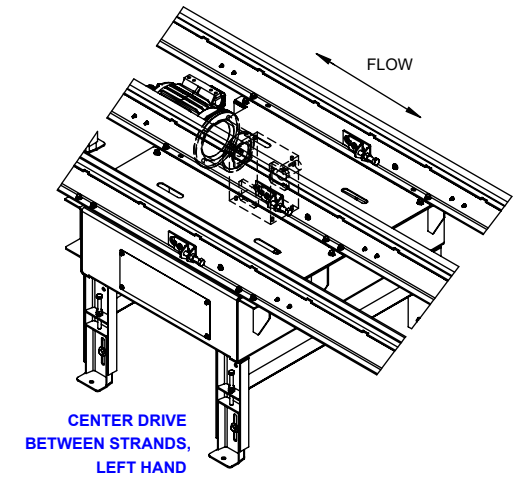
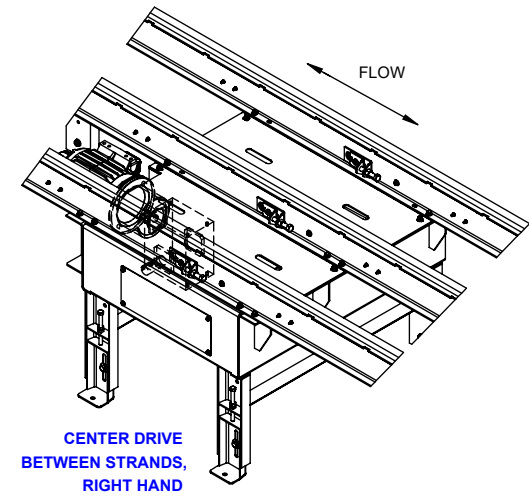
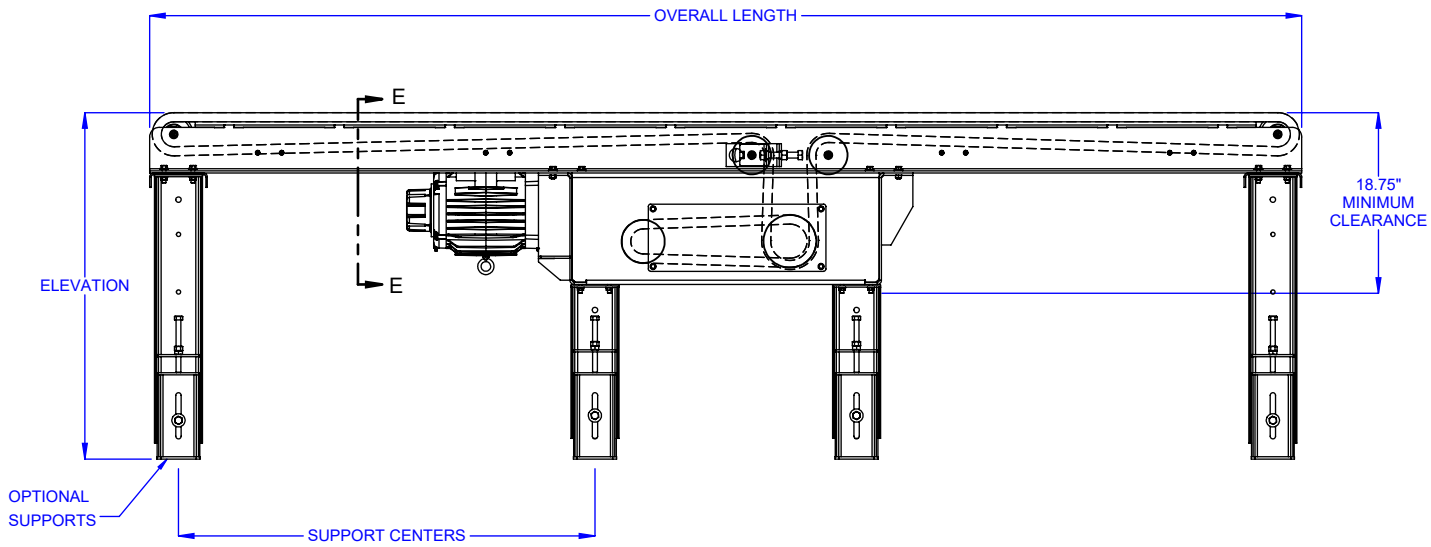
DESCRIPTION: MULTI STRAND CHAIN CONVEYOR, HEAVY DUTY

LEWCO, INC. IS COMMITTED TO CONTINUOUS IMPROVEMENT AND RESERVES THE RIGHT TO CHANGE DESIGNS AND SPECIFICATIONS WITHOUT NOTICE.

THIS DRAWING MUST NOT BE COPIED, REPRODUCED OR USED FOR ANY PURPOSE WITHOUT THE WRITTEN CONSENT OF LEWCO, INC. ALL RIGHTS RESERVED.

**LEWCO**

706 LANE ST. SANDUSKY, OH 44870, U.S.A.



MODEL: MSCCH

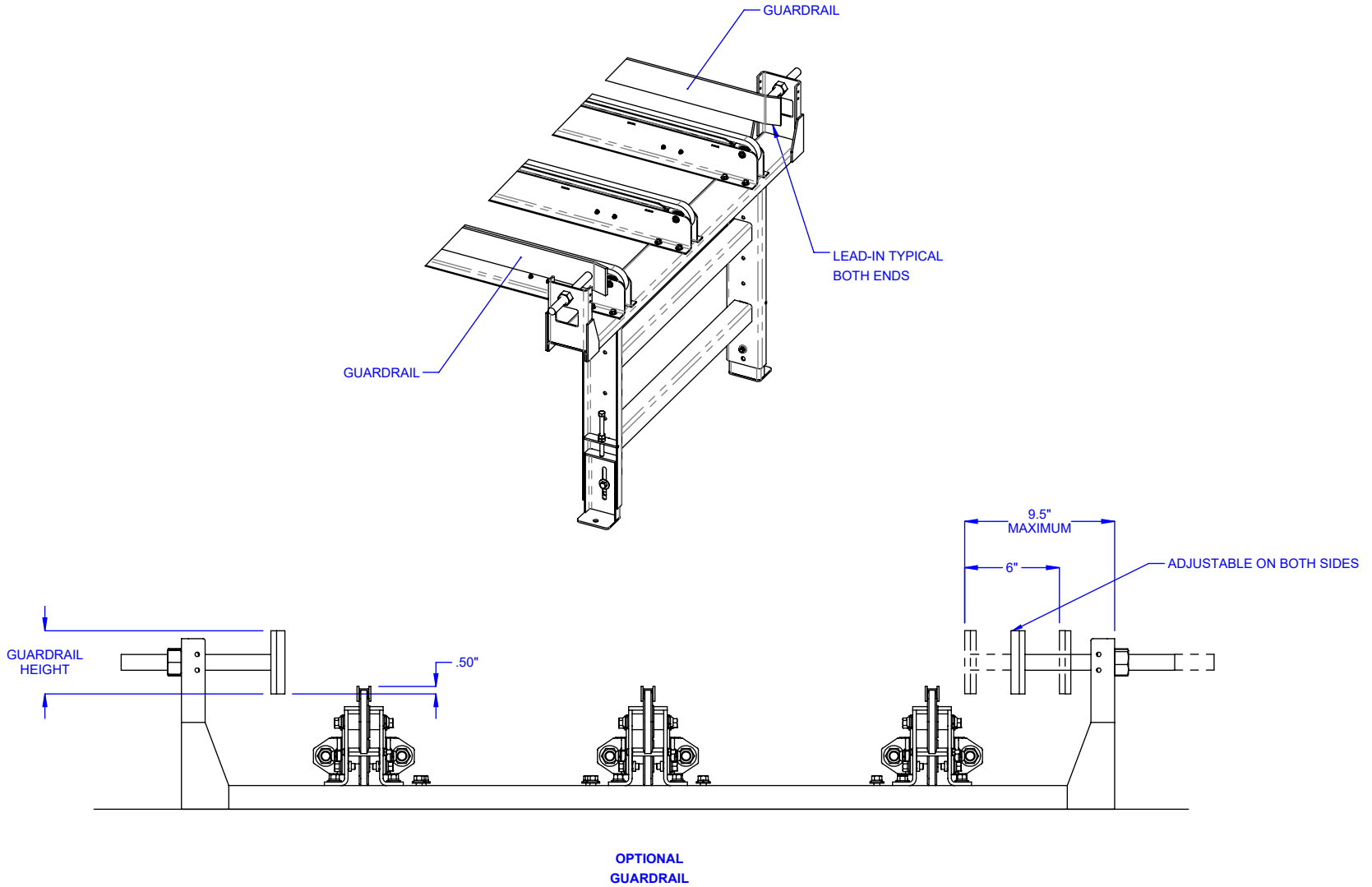
DESCRIPTION: MULTI STRAND CHAIN CONVEYOR, HEAVY DUTY

LEWCO, INC. IS COMMITTED TO CONTINUOUS IMPROVEMENT AND RESERVES THE RIGHT TO CHANGE DESIGNS AND SPECIFICATIONS WITHOUT NOTICE.

THIS DRAWING MUST NOT BE COPIED, REPRODUCED OR USED FOR ANY PURPOSE WITHOUT THE WRITTEN CONSENT OF LEWCO, INC. ALL RIGHTS RESERVED.



706 LANE ST. SANDUSKY, OH 44870, U.S.A.



MODEL: MSCCH  
 DESCRIPTION: MULTI STRAND CHAIN CONVEYOR, HEAVY DUTY

LEWCO, INC. IS COMMITTED TO CONTINUOUS IMPROVEMENT AND RESERVES THE RIGHT TO CHANGE DESIGNS AND SPECIFICATIONS WITHOUT NOTICE.  
 THIS DRAWING MUST NOT BE COPIED, REPRODUCED OR USED FOR ANY PURPOSE WITHOUT THE WRITTEN CONSENT OF LEWCO, INC. ALL RIGHTS RESERVED.

