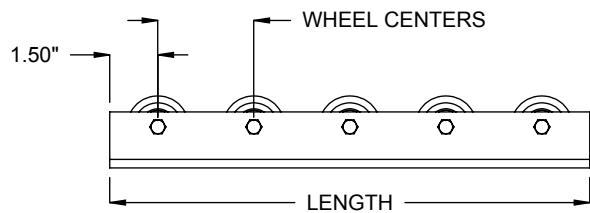
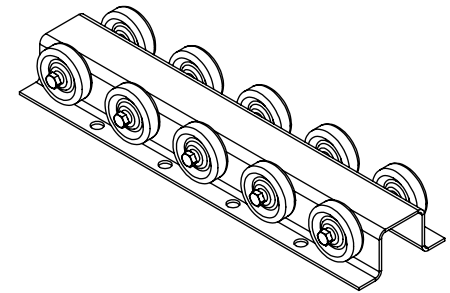
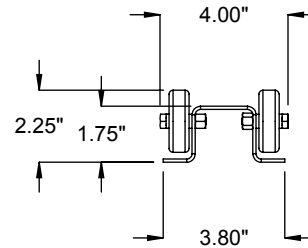
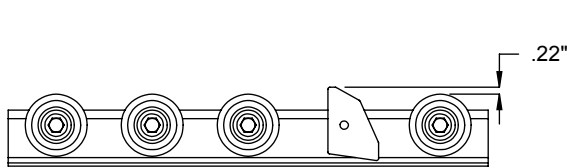
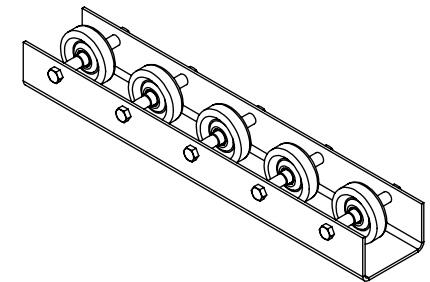
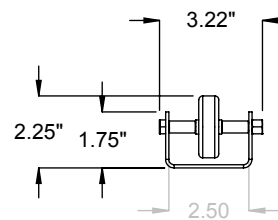


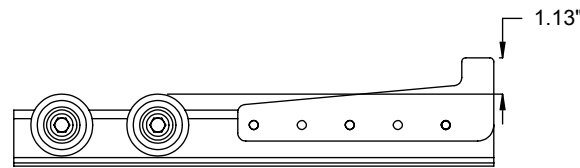
WRT - WHEEL RAIL, STYLE T



WRU - WHEEL RAIL, STYLE U



ANTI BACK STOP



PALLET STOP

SPECIFICATIONS

LENGTH: 12" - 120"

WHEEL CENTERS: 2", 3"

WHEEL: Standard 1.9" diameter steel, oiled, 75 lbs dynamic load. Optional wheels available with 100 lbs or 2000 lbs dynamic load.

WHEEL SURFACE: Standard zinc plated. Optional orange urethane.

FRAME: Standard steel formed 12 gage channel.

END STOP: Standard no end stop included. Optional end stops include anti-backup stop and pallet stop.

FRAME FINISH: Standard finish is OSHA safety blue powder. Optional colors include green, beige, gray, orange, black and yellow.

Model: WRT, WRU - Wheel Rail, Styles T and U

REV

0

