

MDCS – Medium Duty, Channel Frame Slider Bed

Model MDCS is a medium duty, channel frame slider bed belt conveyor. The channel frame style makes it ideal for mounting sensors and other devices. These conveyors are used to provide a reliable way of transporting products in assembly, sorting, testing, and packaging applications.

Belt Width

- 12", 18", 24", 30", 36", 42", 48"

Length

- 48" to 1,200"

Belt

- PVC120 EMB embossed cover with clipper lacing.
- Optional:
 - PVC120 smooth top
 - PVC150 rough top
 - PVC120, Black, friction both sides
 - PVC Food grade, White
 - Thermoplastic polyurethane (TPU) Covered Belt
 - PVC longitudinal groove
 - No Belt
- V-Guided Belt design also available.

Drive Location

- End Drive, Bottom Right
- Optional:
 - End Drive, Bottom, Left
 - End Drive, Side, Right or Left
 - Center Drive, Right or Left (standard for conveyors with reverse)

Motor

- 1/2 HP to 2 HP
- Totally Enclosed Fan Cooled motor
- Optional:
 - Inverter Duty motor
 - Power Off Brake motor
- Voltage: 230/460/ 3Ph/ 60hz
- Optional:
 - 115V/ 1Ph/ 60Hz
 - 208V/ 1Ph/ 60Hz
 - 230V/ 1Ph/ 60Hz
 - 575V/ 3Ph/ 60Hz
 - 90V DC

Speed

- 15 to 300 FPM (feet per minute)
- Reverse capability optional

Control Options

- No controls (provided by others)
- Variable Speed Controller
- Combination motor starter with disconnect, fixed speed
- Combination motor starter with disconnect, variable speed
- PLC with HMI

Conveyor Color

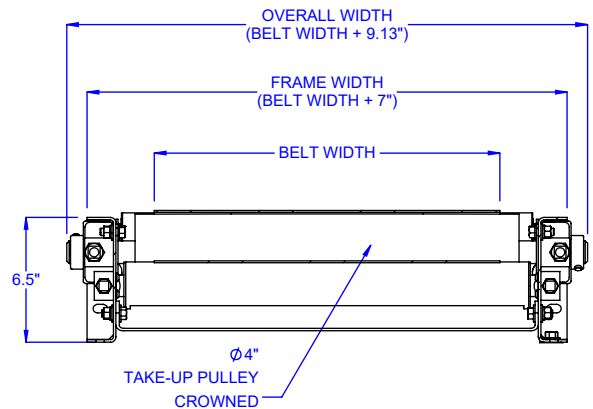
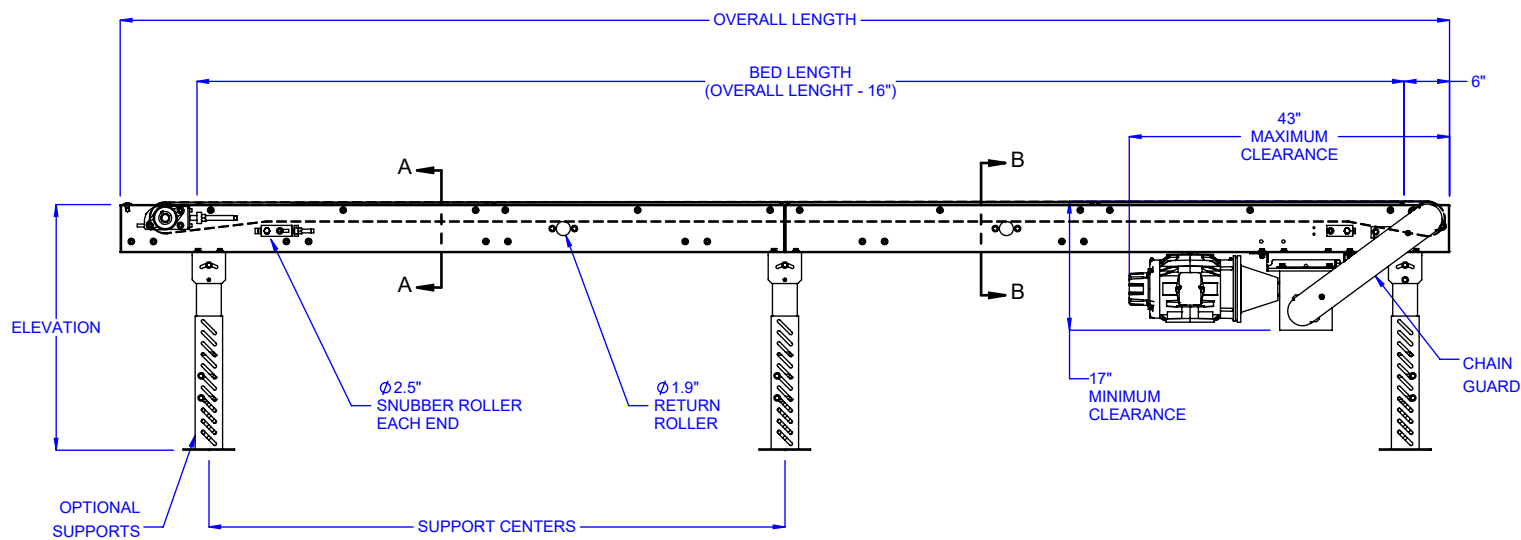
- Blue (RAL 5017)
- Guards are yellow (RAL 1023)
- Moving parts are bright red orange (RAL 2008).
- Optional:
 - Light Gray (RAL 7035)
 - Repose Gray (not an RAL)
 - Patina Green (RAL 6000)
 - Signal White (RAL 9003)
 - Jet Black (RAL 9005)
 - Flat Black (not an RAL)
 - Custom colors available

Additional Options

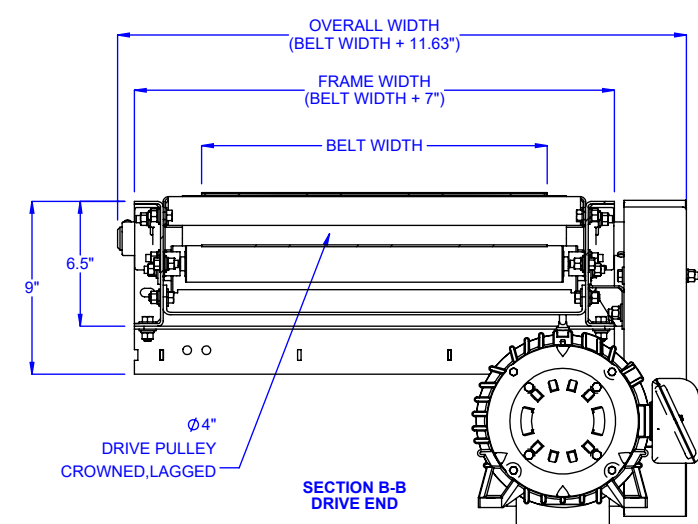
- Conveyor Supports with or without casters
- Guardrail
- Photo Eye Sensor(s)
- Custom sizes and features available. Please consult a LEWCO Applications Engineer for more information.

Quality Assurance

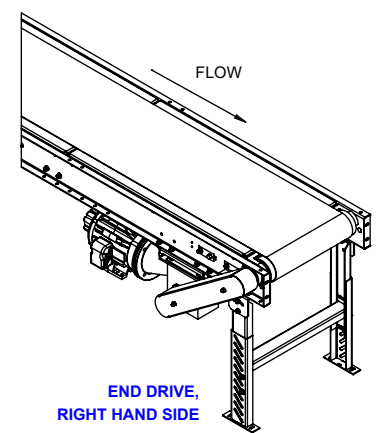
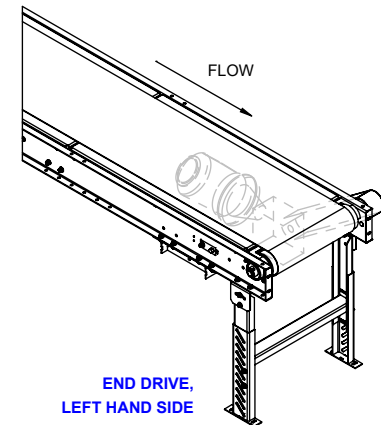
- Each unit comes complete with a (1) year warranty.
- Manufactured under ISO 9001 Quality Certified System.



SECTION A-A
TAKE-UP END
ALL DRIVES TYPICAL



SECTION B-B
DRIVE END



| LOAD CAPACITY @ 60 FPM (LBS) | | | | | | | |
|------------------------------|-------|------|------|------|------|------|------|
| HP | WIDTH | | | | | | |
| | 12" | 18" | 24" | 30" | 36" | 42" | 48" |
| 1/2 | 290 | 285 | 280 | 270 | 265 | 260 | 250 |
| 3/4 | 445 | 440 | 435 | 425 | 420 | 410 | 405 |
| 1 | 600 | 590 | 585 | 580 | 570 | 565 | 560 |
| 1 1/2 | 905 | 895 | 890 | 885 | 880 | 870 | 865 |
| 2 | 1210 | 1205 | 1200 | 1190 | 1185 | 1175 | 1170 |
| LOAD CAPACITY @ 30 FPM (LBS) | | | | | | | |
| HP | WIDTH | | | | | | |
| | 12" | 18" | 24" | 30" | 36" | 42" | 48" |
| 1/2 | 600 | 590 | 585 | 580 | 575 | 570 | 560 |
| 3/4 | 905 | 900 | 895 | 890 | 880 | 875 | 870 |
| 1 | 1210 | 1205 | 1200 | 1195 | 1185 | 1180 | 1175 |
| 1 1/2 | - | 1815 | 1810 | 1805 | 1800 | 1790 | 1785 |
| 2 | - | - | 2425 | 2420 | 2410 | 2405 | 2400 |

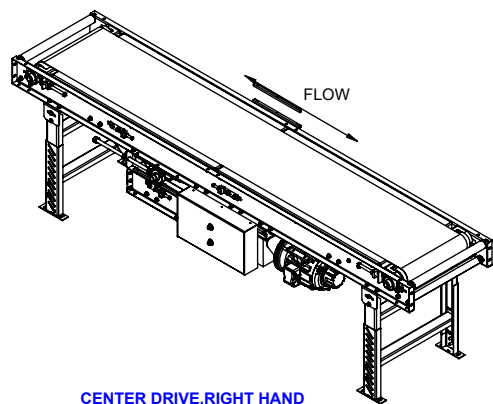
MAXIMUM LOAD PER LINEAR FOOT OF CONVEYOR IS 100 POUNDS - NOT TO EXCEED CAPACITY ABOVE

MODEL: MDCS

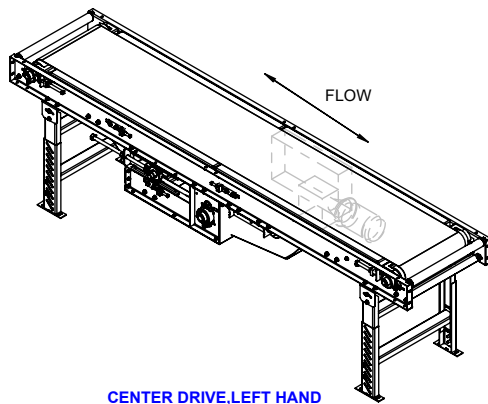
DESCRIPTION: MEDIUM DUTY CHANNEL SLIDER BED BELT CONVEYOR

LEWCO, INC. IS COMMITTED TO CONTINUOUS IMPROVEMENT AND RESERVES THE RIGHT TO CHANGE DESIGNS AND SPECIFICATIONS WITHOUT NOTICE.

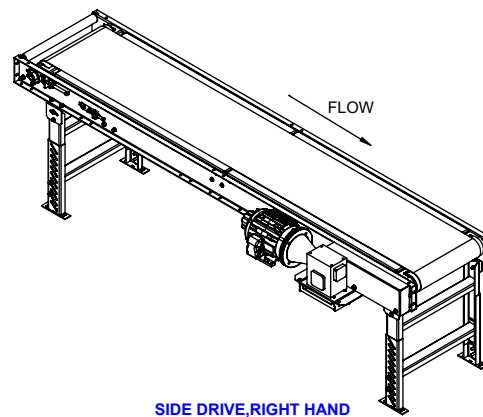
THIS DRAWING MUST NOT BE COPIED, REPRODUCED OR USED FOR ANY PURPOSE WITHOUT THE WRITTEN CONSENT OF LEWCO, INC. ALL RIGHTS RESERVED.



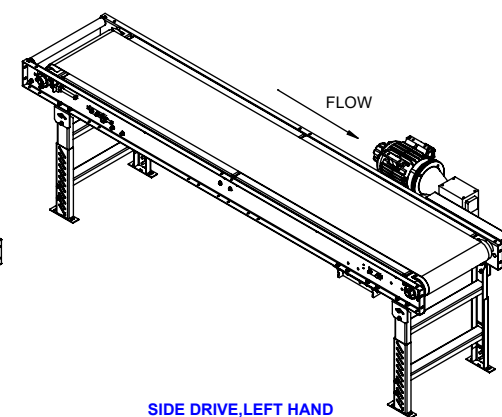
CENTER DRIVE,RIGHT HAND



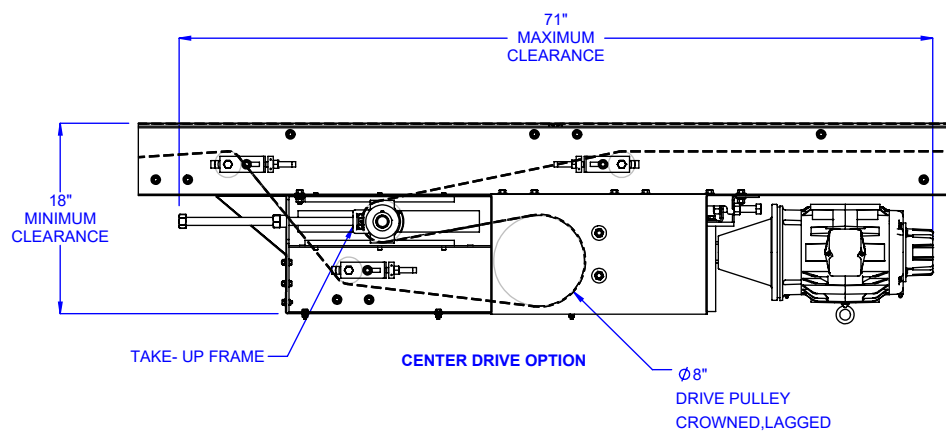
CENTER DRIVE,LEFT HAND



SIDE DRIVE,RIGHT HAND

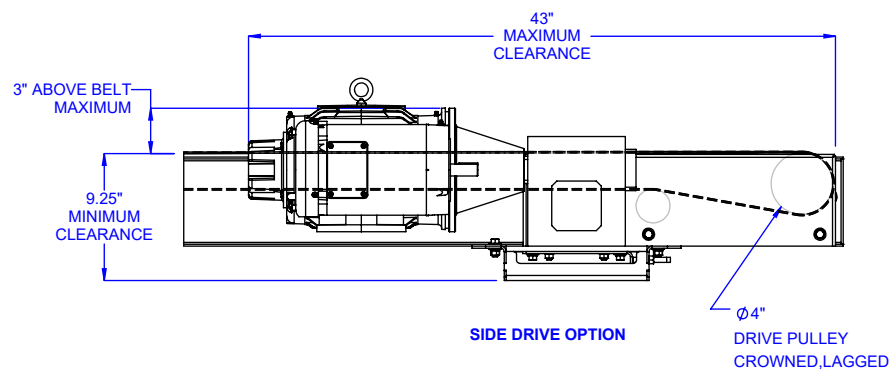


SIDE DRIVE,LEFT HAND



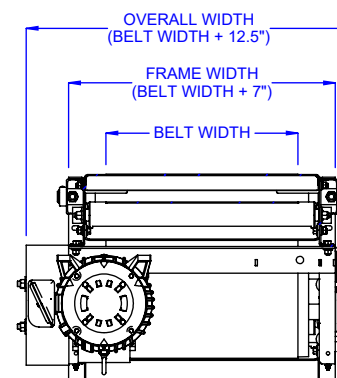
CENTER DRIVE OPTION

Ø8\"/>

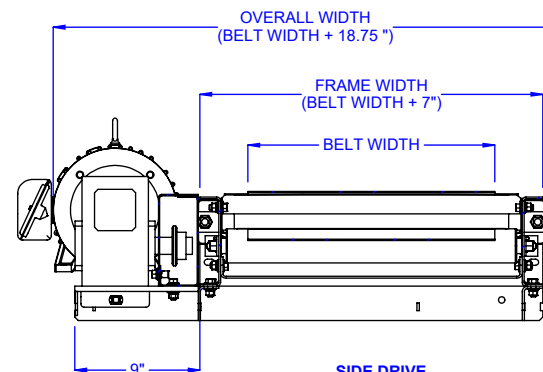


SIDE DRIVE OPTION

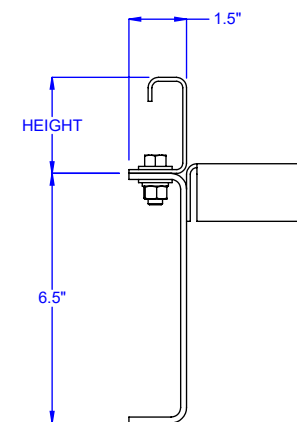
Ø4\"/>



CENTER DRIVE
END VIEW



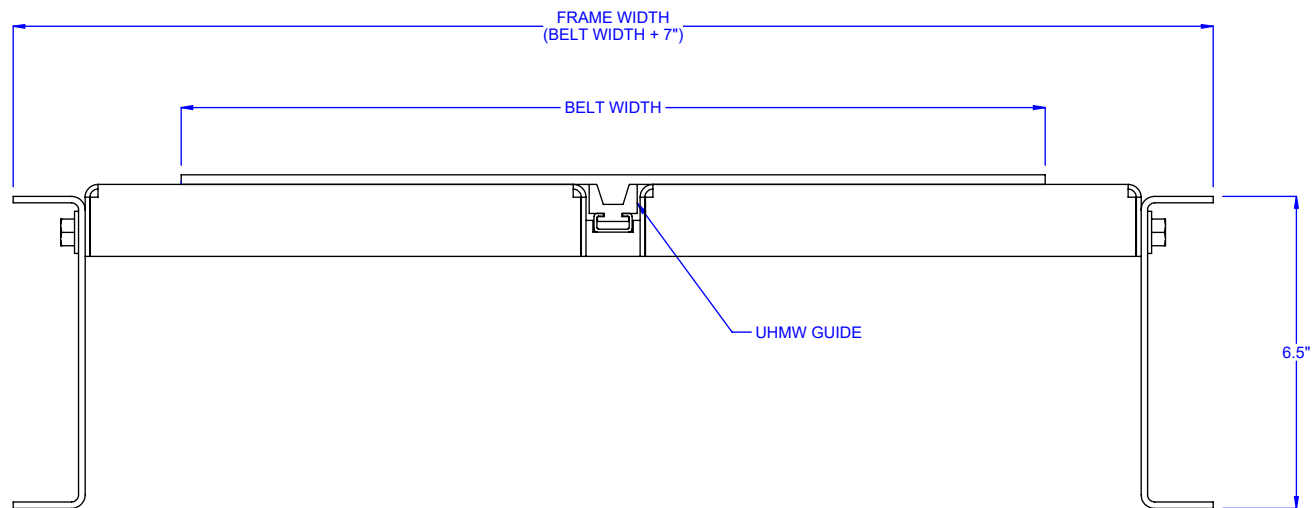
SIDE DRIVE
END VIEW



OPTIONAL
GUARDRAIL

MODEL: MDCS

DESCRIPTION: MEDIUM DUTY CHANNEL SLIDER BED BELT CONVEYOR



OPTIONAL V-GUIDED CONSTRUCTION
(NOTE: PULLEY ARE GROOVED TO ACCOMMODATE THE V-BELT)

MODEL: MDCS

DESCRIPTION: MEDIUM DUTY CHANNEL SLIDER BED BELT CONVEYOR

PAGE: 3 of 3

LEWCO, INC. IS COMMITTED TO CONTINUOUS
IMPROVEMENT AND RESERVES THE RIGHT TO CHANGE
DESIGNS AND SPECIFICATIONS WITHOUT NOTICE.

THIS DRAWING MUST NOT BE COPIED, REPRODUCED
OR USED FOR ANY PURPOSE WITHOUT THE WRITTEN
CONSENT OF LEWCO, INC. ALL RIGHTS RESERVED.

LEWCO

706 LANE ST. SANDUSKY, OH 44870, U.S.A.