



## MDSWM – Flat Wire Mesh Slider Bed

Model MDSWM is a flat wire mesh, roller bed belt conveyor used in applications where hot, cold, or oil soaked parts are conveyed. It can also be used in drying or cooling applications because the open bed construction allows for free airflow. The conveyor can be used to convey parts up to 400 degrees F.

### Belt Width

- 12", 18", 24", 30", 36",

### Length

- 60" to 720"

### Belt

- Wire Mesh, 1/2" x 1" galvanized with clinched edge
- Optional:
  - Wire Mesh, 1/2" x 1" stainless steel with clinched edge
  - Wire Mesh, 1/2" x 1/2" galvanized with welded edge
  - Wire Mesh, 1/2" x 1/2" stainless steel with welded edge

### Drive Location

- End Drive, Bottom Right
- Optional:
  - End Drive, Bottom, Left
  - End Drive, Side, Right or Left

### Motor

- 1/2 HP to 1-1/2 HP
- Totally Enclosed Fan Cooled motor
- Optional:
  - Inverter Duty motor
  - Power Off Brake motor
- Voltage: 230/460/ 3Ph/ 60hz
- Optional:
  - 115V/ 1Ph/ 60Hz
  - 208V/ 1Ph/ 60Hz
  - 230V/ 1Ph/ 60Hz
  - 575V/ 3Ph/ 60Hz
  - 90V DC

### Speed

- 15 to 60 FPM (feet per minute)
- Reverse capability optional

### Control Options

- No controls (provided by others)
- Variable Speed Controller
- Combination motor starter with disconnect, fixed speed
- Combination motor starter with disconnect, variable speed
- PLC with HMI

### Conveyor Color

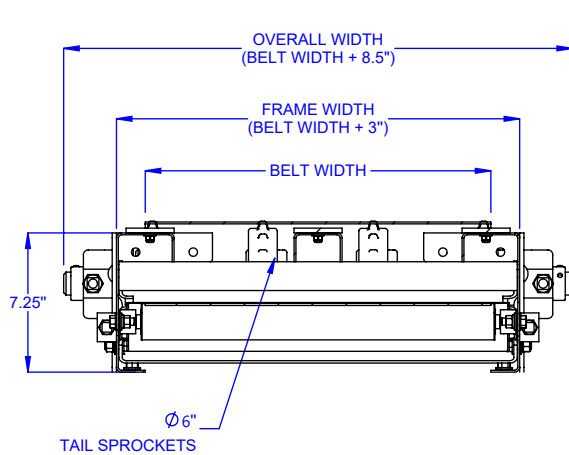
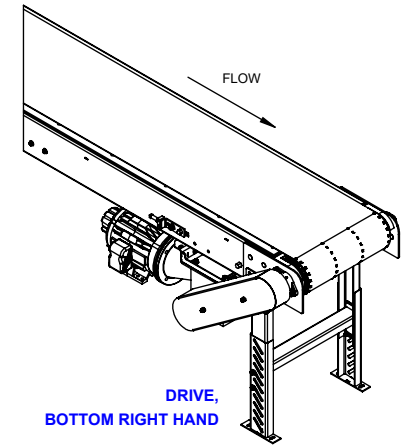
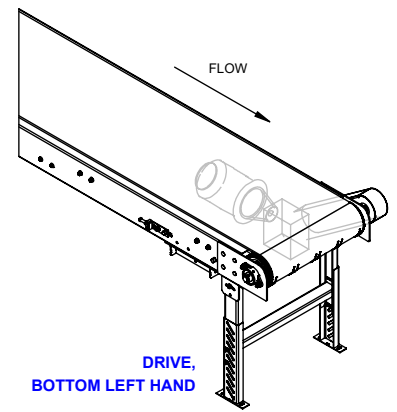
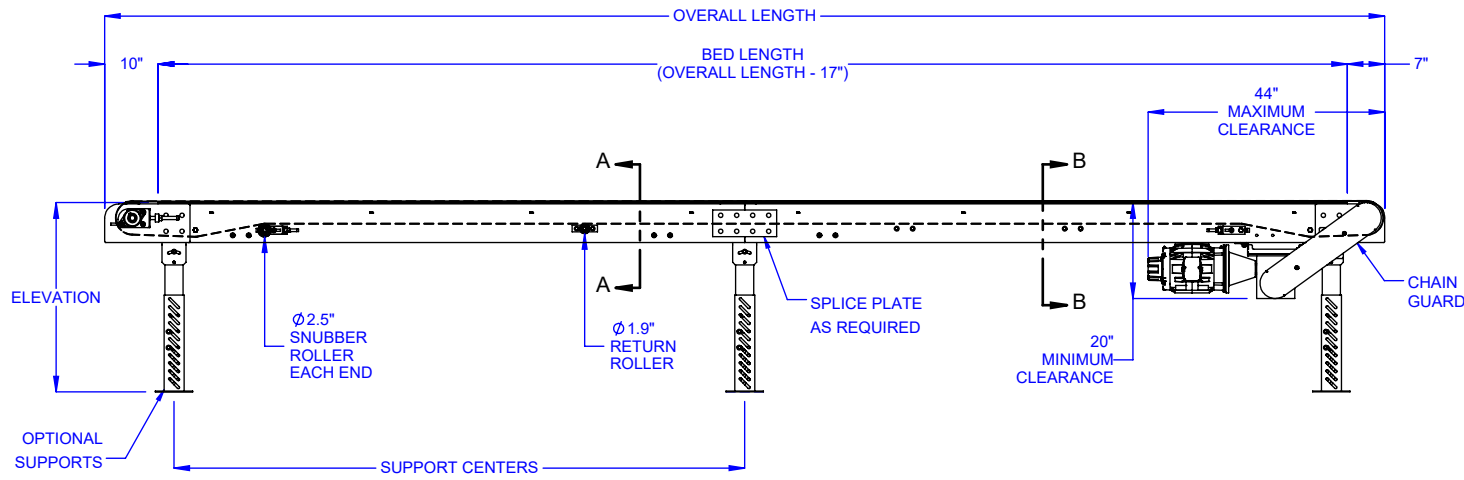
- Blue (RAL 5017)
- Guards are yellow (RAL 1023)
- Moving parts are bright red orange (RAL 2008).
- Optional:
  - Light Gray (RAL 7035)
  - Repose Gray (not an RAL)
  - Patina Green (RAL 6000)
  - Signal White (RAL 9003)
  - Jet Black (RAL 9005)
  - Flat Black (not an RAL)
  - Custom colors available

### Additional Options

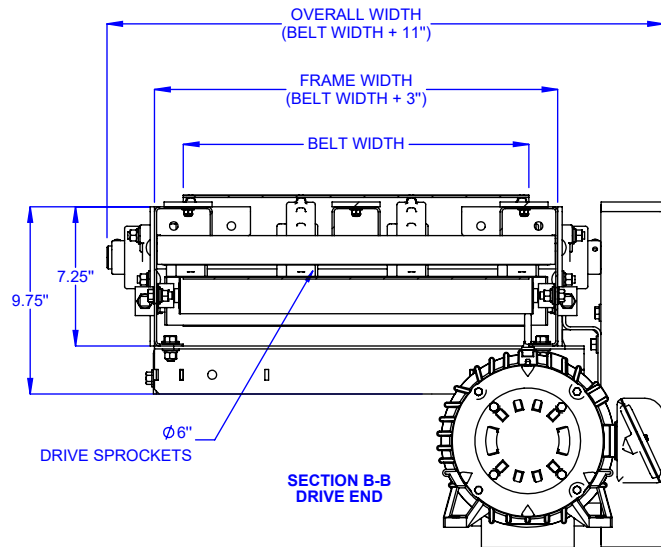
- Conveyor Supports with or without casters
- Guardrail
- Photo Eye Sensor(s)
- Custom sizes and features available. Please consult a LEWCO Applications Engineer for more information.

### Quality Assurance

- Each unit comes complete with a (1) year warranty.
- Manufactured under ISO 9001 Quality Certified System.



SECTION A-A  
TAIL END  
ALL DRIVES TYPICAL



SECTION B-B  
DRIVE END

LOAD CAPACITY @ 60 FPM (LBS)

HP	WIDTH				
	12"	18"	24"	30"	36"
1/2	350	345	310	275	240
3/4	600	565	530	495	460
1	825	790	755	720	685
1 1/2	1270	1235	1200	1165	1130

LOAD CAPACITY @ 30 FPM (LBS)

HP	WIDTH				
	12"	18"	24"	30"	36"
1/2	830	795	760	725	690
3/4	1275	1240	1205	1170	1135
1	1720	1685	1650	1615	1580
1 1/2	2610	2575	2540	2505	2470

MAXIMUM LOAD PER LINEAR FOOT OF CONVEYOR IS 75 POUND - NOT TO EXCEED CAPACITY ABOVE.

MODEL: MDSWM

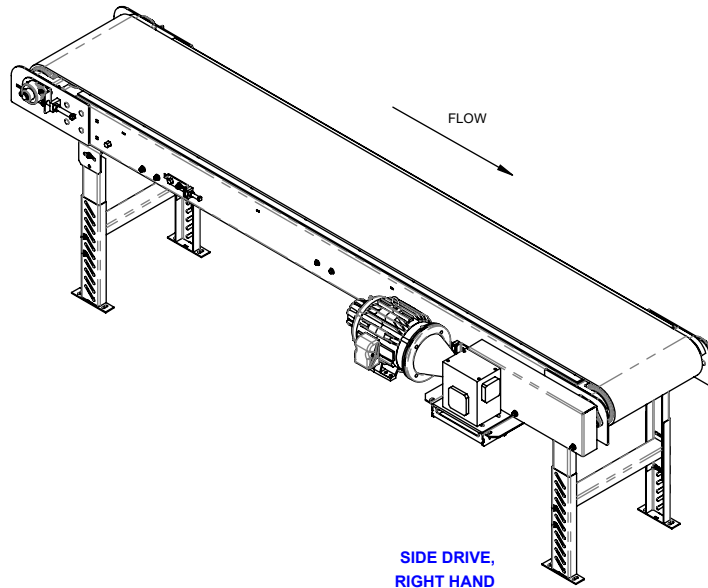
DESCRIPTION: MEDIUM DUTY SLIDER BED FLAT WIRE MESH

LEWCO, INC. IS COMMITTED TO CONTINUOUS IMPROVEMENT AND RESERVES THE RIGHT TO CHANGE DESIGNS AND SPECIFICATIONS WITHOUT NOTICE.

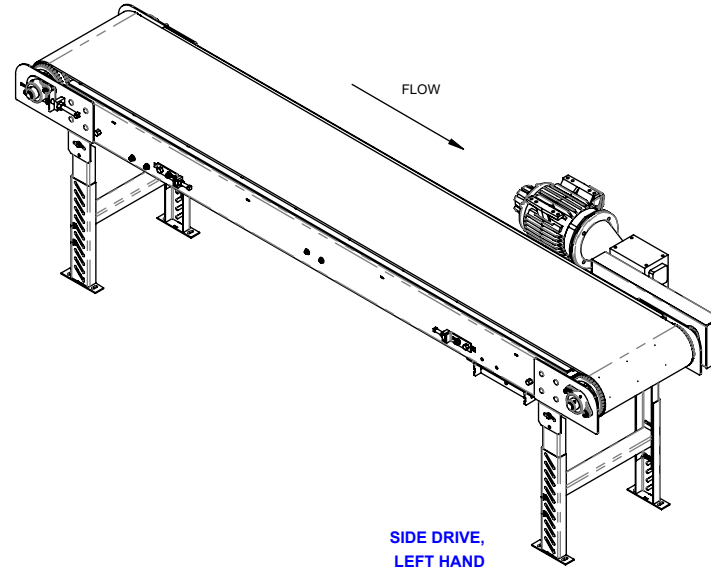
THIS DRAWING MUST NOT BE COPIED, REPRODUCED OR USED FOR ANY PURPOSE WITHOUT THE WRITTEN CONSENT OF LEWCO, INC. ALL RIGHTS RESERVED.



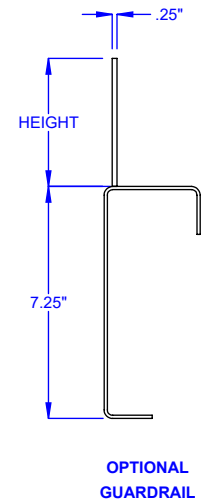
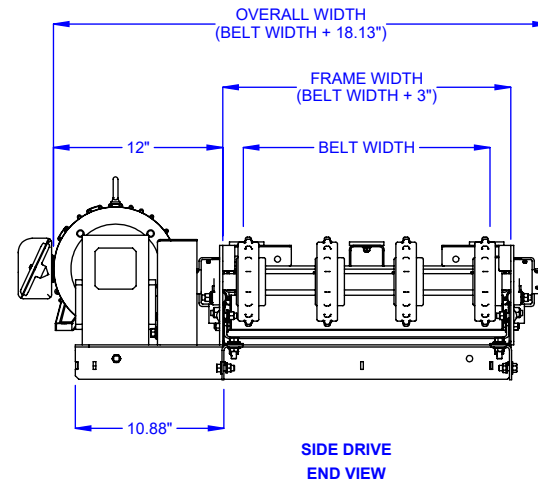
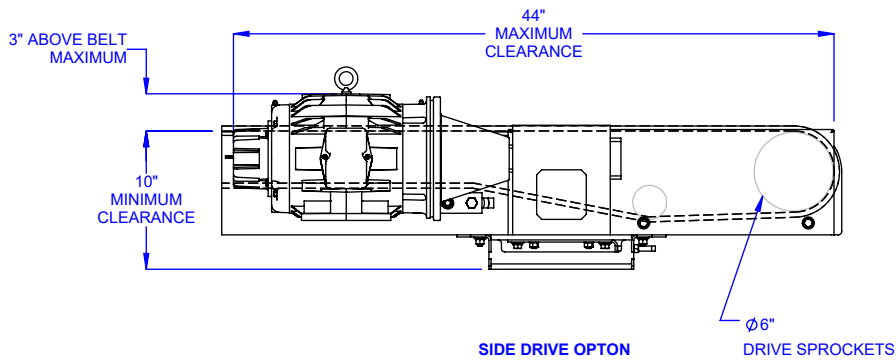
706 LANE ST. SANDUSKY, OH 44870, U.S.A.



**SIDE DRIVE,  
RIGHT HAND**



**SIDE DRIVE,  
LEFT HAND**



**MODEL:** MDSWM  
**DESCRIPTION:** MEDIUM DUTY SLIDER BED FLAT WIRE MESH

LEWCO, INC. IS COMMITTED TO CONTINUOUS  
IMPROVEMENT AND RESERVES THE RIGHT TO CHANGE  
DESIGNS AND SPECIFICATIONS WITHOUT NOTICE.

THIS DRAWING MUST NOT BE COPIED, REPRODUCED  
OR USED FOR ANY PURPOSE WITHOUT THE WRITTEN  
CONSENT OF LEWCO, INC. ALL RIGHTS RESERVED.