



MDRWM – Flat Wire Mesh, Roller Bed with 1.90” Diameter Rollers

Model MDRWM is a flat wire mesh, roller bed belt conveyor used in applications where hot, cold, or oil soaked parts are conveyed. The roller bed design is capable of moving heavier loads with less power, and the open bed construction allows for free air flow, which is ideal for drying or cooling applications. The conveyor can be used to convey parts up to 400 degrees F.

Belt Width

- 12”, 18”, 24”, 30”, 36”,

Length

- 60” to 720”

Belt

- Wire Mesh, ½” x 1” galvanized with clinched edge
- Optional:
 - Wire Mesh, ½” x 1” stainless steel with clinched edge
 - Wire Mesh, ½” x ½” galvanized with welded edge
 - Wire Mesh, ½” x ½” stainless steel with welded edge

Drive Location

- End Drive, Bottom Right
- Optional:
 - End Drive, Bottom, Left
 - End Drive, Side, Right or Left

Motor

- 1/2 HP to 1-1/2 HP
- Totally Enclosed Fan Cooled motor
- Optional:
 - Inverter Duty motor
 - Power Off Brake motor
- Voltage: 230/460/ 3Ph/ 60hz
- Optional:
 - 115V/ 1Ph/ 60Hz
 - 208V/ 1Ph/ 60Hz
 - 230V/ 1Ph/ 60Hz
 - 575V/ 3Ph/ 60Hz
 - 90V DC

Speed

- 15 to 60 FPM (feet per minute)
- Reverse capability optional

Control Options

- No controls (provided by others)
- Variable Speed Controller
- Combination motor starter with disconnect, fixed speed
- Combination motor starter with disconnect, variable speed
- PLC with HMI

Conveyor Color

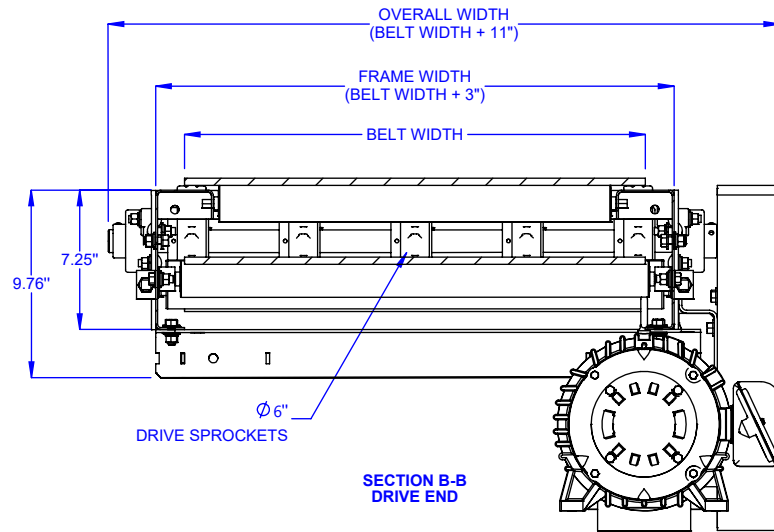
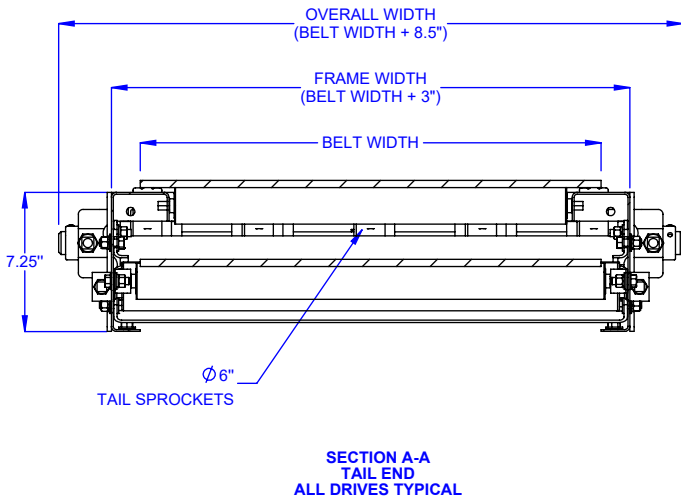
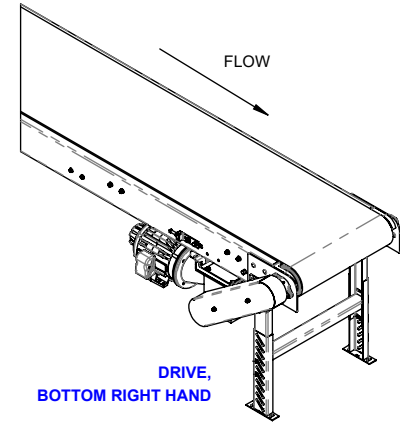
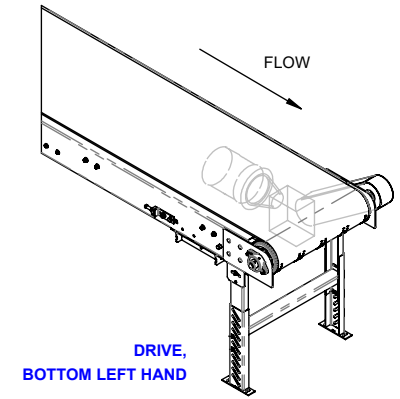
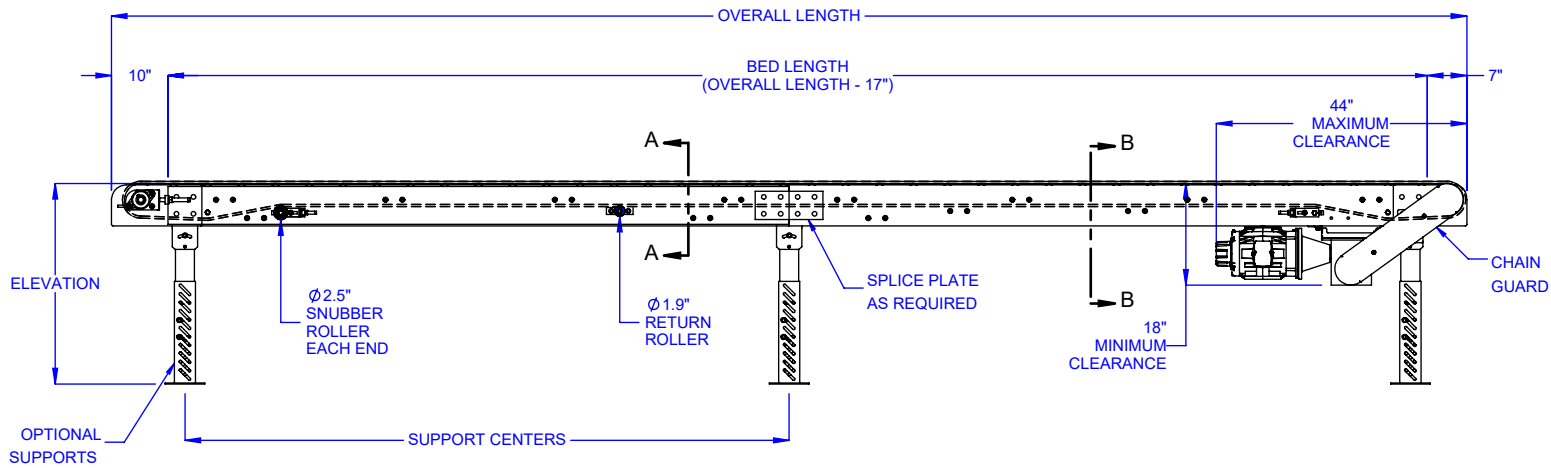
- Blue (RAL 5017)
- Guards are yellow (RAL 1023)
- Moving parts are bright red orange (RAL 2008).
- Optional:
 - Light Gray (RAL 7035)
 - Repose Gray (not an RAL)
 - Patina Green (RAL 6000)
 - Signal White (RAL 9003)
 - Jet Black (RAL 9005)
 - Flat Black (not an RAL)
 - Custom colors available

Additional Options

- Conveyor Supports with or without casters
- Guardrail
- Photo Eye Sensor(s)
- Custom sizes and features available. Please consult a LEWCO Applications Engineer for more information.

Quality Assurance

- Each unit comes complete with a (1) year warranty.
- Manufactured under ISO 9001 Quality Certified System.



LOAD CAPACITY @ 60 FPM (LBS)					
HP	WIDTH				
	12"	18"	24"	30"	36"
1/2	655	585	520	450	380
3/4	1065	995	925	860	790
1	1470	1405	1335	1265	1200
1 1/2	2290	2220	2150	2085	2015
LOAD CAPACITY @ 30 FPM (LBS)					
HP	WIDTH				
	12"	18"	24"	30"	36"
1/2	1480	1410	1345	1275	1205
3/4	2300	2230	2160	2090	2025
1	3115	3040	2980	2910	2840
1 1/2	4750	4680	4615	4545	4475

MAXIMUM LOAD PER LINEAR FOOT OF CONVEYOR IS 75 POUND - NOT TO EXCEED CAPACITY ABOVE.

MODEL: MDRWM

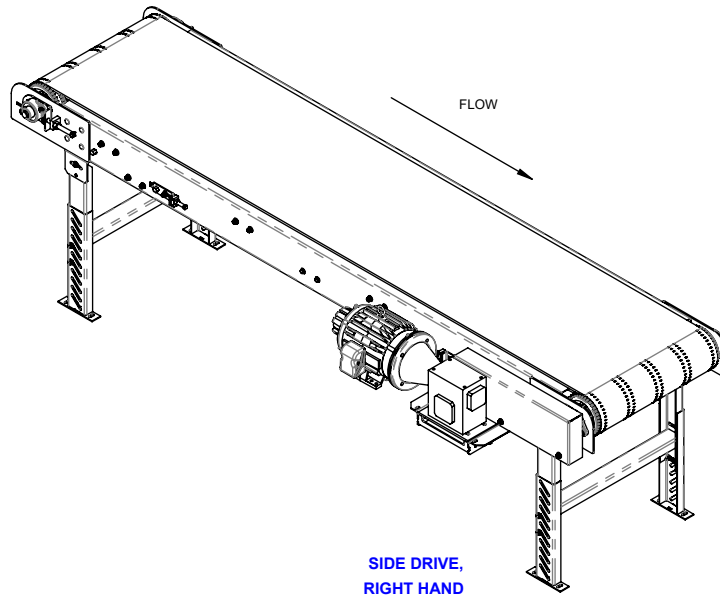
DESCRIPTION: MEDIUM DUTY ROLLER BED FLAT WIRE MESH

LEWCO, INC. IS COMMITTED TO CONTINUOUS IMPROVEMENT AND RESERVES THE RIGHT TO CHANGE DESIGNS AND SPECIFICATIONS WITHOUT NOTICE.

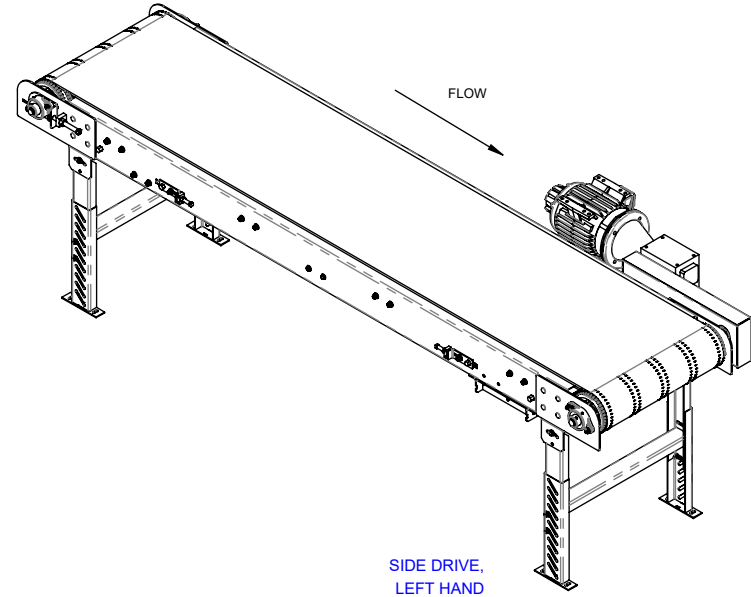
THIS DRAWING MUST NOT BE COPIED, REPRODUCED OR USED FOR ANY PURPOSE WITHOUT THE WRITTEN CONSENT OF LEWCO, INC. ALL RIGHTS RESERVED.

LEWCO

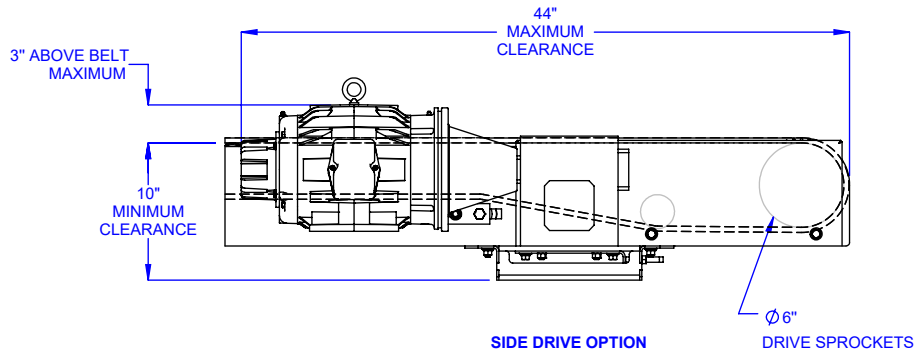
706 LANE ST. SANDUSKY, OH 44870, U.S.A.



SIDE DRIVE,
RIGHT HAND

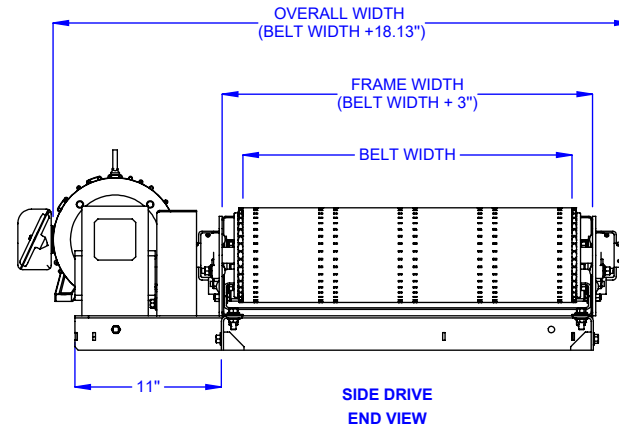


SIDE DRIVE,
LEFT HAND

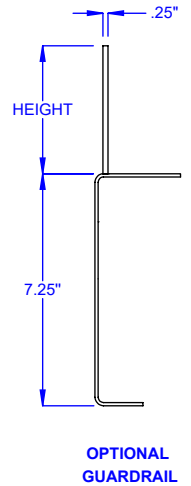


SIDE DRIVE OPTION

Ø6"
DRIVE SPROCKETS



SIDE DRIVE
END VIEW



OPTIONAL
GUARDRAIL

MODEL: MDRWM

DESCRIPTION: MEDIUM DUTY ROLLER BED FLAT WIRE MESH

LEWCO, INC. IS COMMITTED TO CONTINUOUS IMPROVEMENT AND RESERVES THE RIGHT TO CHANGE DESIGNS AND SPECIFICATIONS WITHOUT NOTICE.

THIS DRAWING MUST NOT BE COPIED, REPRODUCED OR USED FOR ANY PURPOSE WITHOUT THE WRITTEN CONSENT OF LEWCO, INC. ALL RIGHTS RESERVED.



706 LANE ST. SANDUSKY, OH 44870, U.S.A.