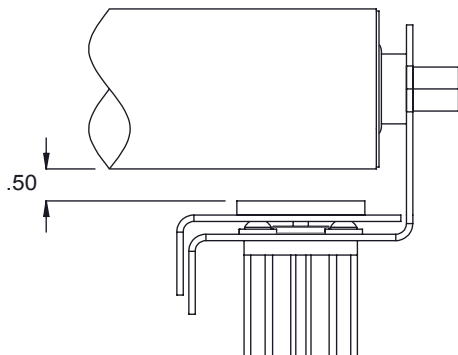
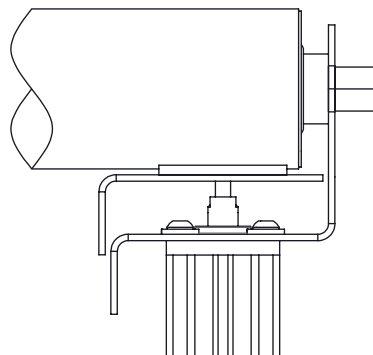


BRAKE - DOWN POSITION



BRAKE - UP POSITION



NOTE: ROLLERS AT THE BRAKE ARE 1/8" SHORTER TO ALLOW SPACE TO MOUNT THE BRAKE TO THE CONVEYOR RAIL

SPECIFICATIONS

BETWEEN FRAMES: 6" - 61"

ROLLER CENTERS: 3", 4", 4.5"

ROLLERS: 2514 Roller - 2.5" dia., 14 ga wall tube. 2511 Roller - 2.5" dia., 11ga wall tube. 2607 Roller - 2.625" dia., 7 ga wall tube. Rollers with 11/16" hex cold rolled steel axle, spring retained. Standard bearings are light oil lubricated. Optional bearings are precision or non-precision construction grease packed.

MOUNTING: Escapement frame mounts to the 11/16" hex holes of the conveyor frame.

OPERATION: Extending the cylinders engages the escapement stop.

ROLL COVERS: Optional Orange Polyurethane 1/8" wall. Galvanized tube available for the 2511 roller.

CYLINDERS: Two double acting 1" bore x 1/2" stroke pneumatic cylinders.

AIR REQUIREMENTS: Standard requires 30-40psi of clean, filtered, regulated air at consumption of approximately 0.005 cubic feet per cycle. Optional valve and filter/regulator/lubricator available.

FINISH: Standard finish is OSHA safety orange powder.

Model: RB2500 - Escapement 2.5" Roller Brake, Air Operated

REV
0

