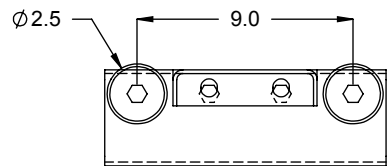
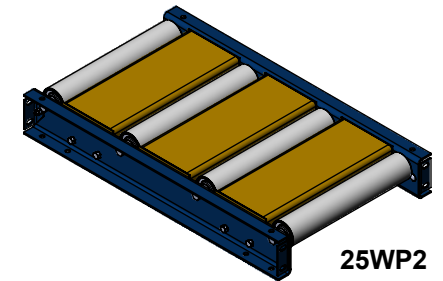
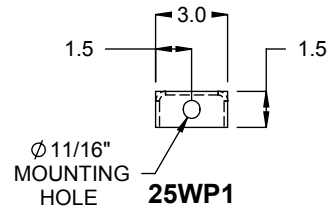
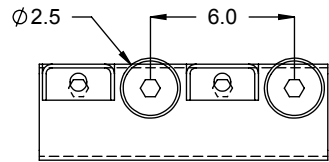
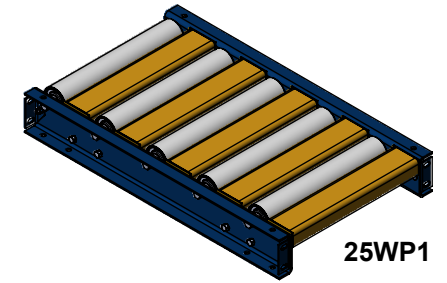
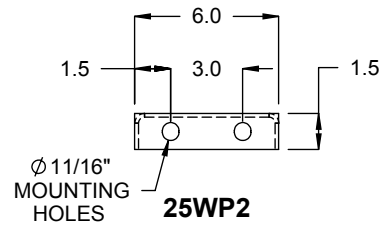


TOP VIEW



SECTION D-D



SPECIFICATIONS

BETWEEN FRAMES: 6" - 61"

MOUNTING: 5/8" Hardware included.

CONSTRUCTION: 8 ga formed steel channel with integral butt couplers.

FINISH: Safety yellow.

ALL PRODUCT, PRODUCT SPECIFICATIONS AND DATA ARE SUBJECT TO CHANGE WITHOUT NOTICE TO IMPROVE RELIABILITY, FUNCTION OR DESIGN OR OTHERWISE.

Model: 25WP1, 25WP2 - Walkover Plate for 2.5" Gravity Roller Conveyor

REV

0

