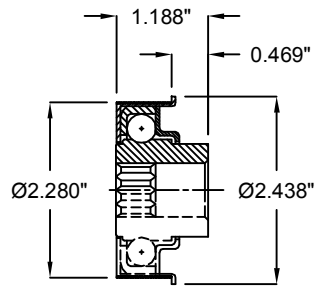
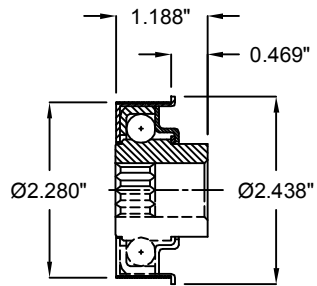


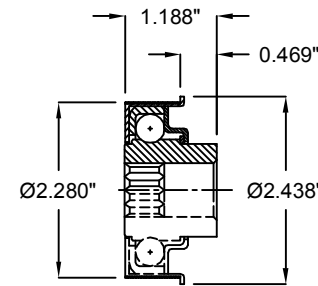
**A50 BEARING**  
 LUBRICATION TYPE: OIL  
 LOAD RATING: 425 LBS.  
 TEMP. RATING: -20 F TO 140 F  
 MAX SPEED: 1200 RPM



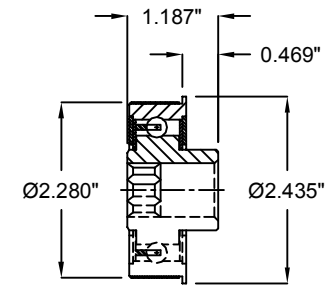
**A51 BEARING**  
 LUBRICATION TYPE: GREASE  
 LOAD RATING: 425 LBS.  
 TEMP. RATING: -20 F TO 220 F  
 MAX SPEED: 1200 RPM



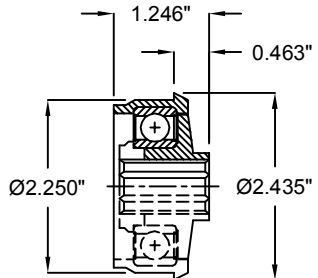
**A52 BEARING**  
 LUBRICATION TYPE: OIL  
 LOAD RATING: 425 LBS.  
 TEMP. RATING: -20 F TO 140 F  
 MAX SPEED: 1200 RPM



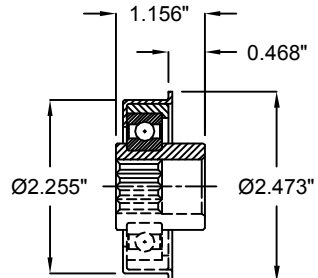
**A53 BEARING**  
 LUBRICATION TYPE: GREASE  
 LOAD RATING: 425 LBS.  
 TEMP. RATING: -20 F TO 220 F  
 MAX SPEED: 1200 RPM



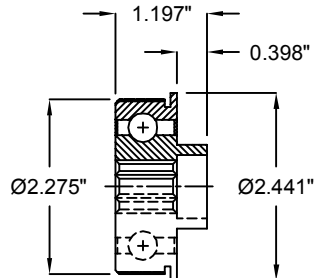
**A54 BEARING**  
 LUBRICATION TYPE: OIL  
 LOAD RATING: 1050 LBS.  
 TEMP. RATING: -20 F TO 140 F  
 MAX SPEED: 1200 RPM



**A60 BEARING**  
 LUBRICATION TYPE: GREASE  
 LOAD RATING: 1770 LBS.  
 TEMP. RATING: -20 F TO 185 F  
 MAX SPEED: 1200 RPM



**A63 BEARING**  
 LUBRICATION TYPE: GREASE  
 LOAD RATING: 1000 LBS.  
 TEMP. RATING: -4 F TO 180 F  
 MAX SPEED: 200 RPM



**A66 BEARING**  
 LUBRICATION TYPE: GREASE  
 LOAD RATING: 1000 LBS.  
 TEMP. RATING: -20 F TO 220 F  
 MAX SPEED: 1200 RPM

<b>SPECIFICATIONS</b>	
<b>BETWEEN FRAME:</b> 6" - 61"	
<b>ROLL CONSTRUCTION:</b> Round tube, 2.625" Diameter, 7 Gauge, HRPO.	
<b>BEARINGS:</b> <u>Standard</u> (A50) Non-precision. <u>Optional</u> Non-precision, Semi-precision and Precision bearings; oiled or grease packed. All bearings with 11/16" hex axle.	
<b>AXLE RETENTION:</b> <u>Standard</u> 3" Spring staked one side. <u>Optional</u> cotter pins.	
<b>ROLLER SURFACE:</b> <u>Standard</u> Carbon Steel.	

**Model:** R2607 - Roller Assembly

REV	
0	