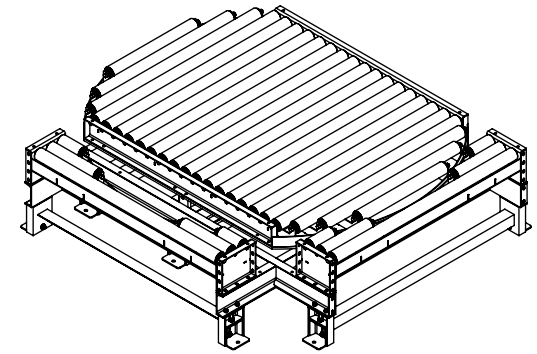
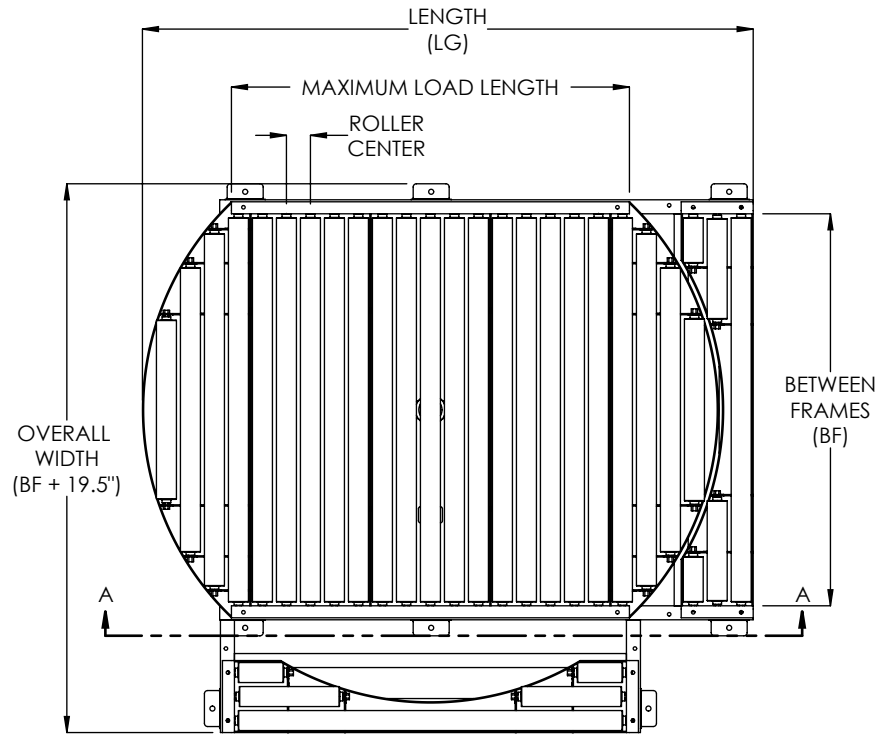
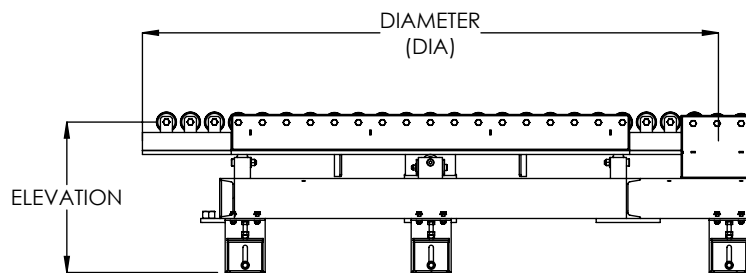


LOAD CAPACITY: 2000 LB MAXIMUM LOAD DISTRIBUTED ON CONVEYOR.



BETWEEN FRAMES (IN)	DIAMETER (IN)	MAXIMUM LOAD LENGTH (IN)
27	43	27
33	52	32
39	61	36
45	70	45
51	79	50
55	84	54
57	84	54
61	97	63



SECTION A-A

SPECIFICATIONS

BETWEEN FRAMES: 27", 33", 39", 45", 51", 55", 57", 61"

ELEVATION: 13.0" - 36.0"

ROTATION: 360 degrees with spring loaded detents at 90 degree increments.

ROLLER CENTERS: 4-1/2"

ROLLERS: 2.5" diameter, 11ga wall tube or 2.625" diameter, 7ga wall tube. All rollers with 11/16" hex cold rolled steel axles, spring retained. Standard bearings are precision, grease packed.

TURNTABLE PLATE: Standard is 1/2" plate with slewing ring center bearing.

ROLL COVERS: Optional orange polyurethane, 1/8" wall or galvanized tube for 2.5" diameter roller.

TRANSITION ROLLERS: Standard set for pass through conveyor line. Optional transition section can be configured for 90° turns.

FRAME FINISH: Standard finish is OSHA safety blue powder. Optional colors include green, beige, gray, orange, black and yellow.

Model: NPTG25 - Non-Powered Turntable with 2500 Series Gravity Conveyor

REV	
0	