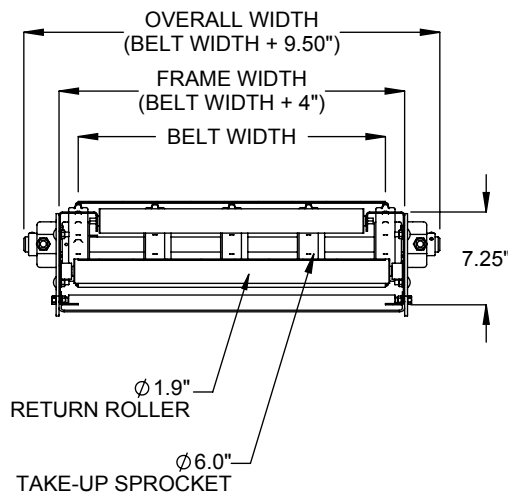
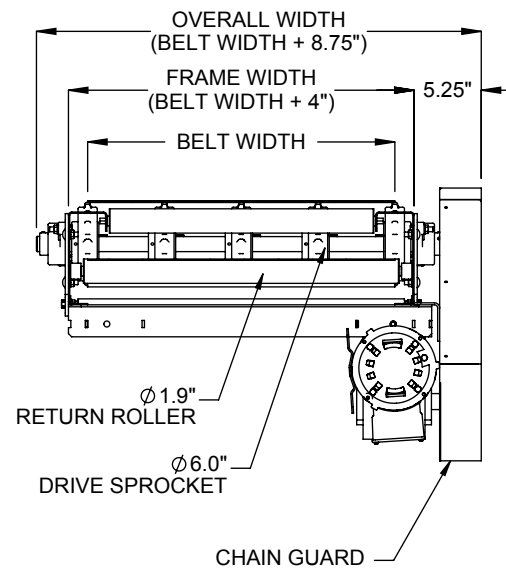


END DRIVE, BOTTOM RIGHT HAND (SHOWN)
END DRIVE, BOTTOM LEFT HAND (OPPOSITE)



SECTION A-A
TAKE-UP END
TYPICAL ALL DRIVES



SECTION B-B
DRIVE END

SPECIFICATIONS

BELT WIDTH: 12", 18", 24", 30", 36"

BEGINNING ELEVATION: 9" - 126" **LENGTH:** 60" - 720"

ENDING ELEVATION: 19" - 126" **SPEED:** 15 - 60 FPM

ROLLER CENTERS: 6"

ROLLERS: 1.9" diameter, 16ga wall tubes with 7/16" hex cold rolled steel axle spring retained. Precision grease packed bearings.

BELT: Standard galvanized with clinched edge. Options include galvanized or Stainless material with clinched or welded edge.

DRIVE: Standard drive is an End drive, Bottom right hand side. Optional drives include End drive, Bottom left hand side, Side drive right or left hand side.

MOTOR: 1/2 HP through 1-1/2 HP. Energy efficient, inverter duty & brake motors also available. Voltages include 120/1/60, 230/3/60, 460/3/60, 575/3/60 & DC voltage.

SUPPORT CENTERS: Standard supports are floor supports on 10' centers. Optional floor supports on 5' centers.

GUARDRAIL: Standard is no guardrail. Optional 2.0", 4.0" & 6.0"; 1/4" thickness, welded on flat.

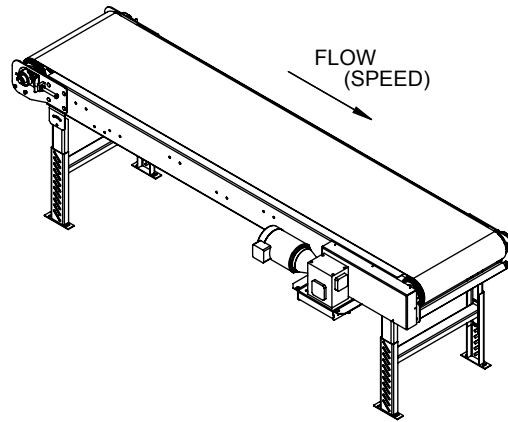
FRAME FINISH: Standard finish is OSHA safety blue powder. Optional colors include green, beige, gray, orange, black and yellow.

Model: MDRWM - Medium Duty Roller Bed, Flat Wire Mesh

REV

1





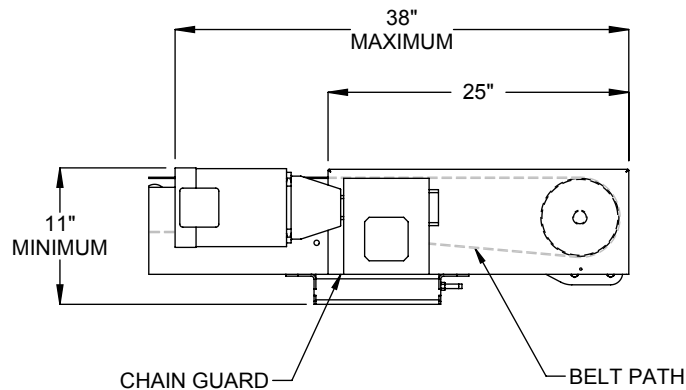
END DRIVE, SIDE RIGHT HAND (SHOWN)
END DRIVE, SIDE LEFT HAND (OPPOSITE)

LOAD CAPACITY @ 60 FPM (LBS)					
HP	WIDTH				
	12"	18"	24"	30"	36"
1/2	655	585	520	450	380
3/4	1065	995	925	860	790
1	1470	1405	1335	1265	1200
1 1/2	2290	2220	2150	2085	2015

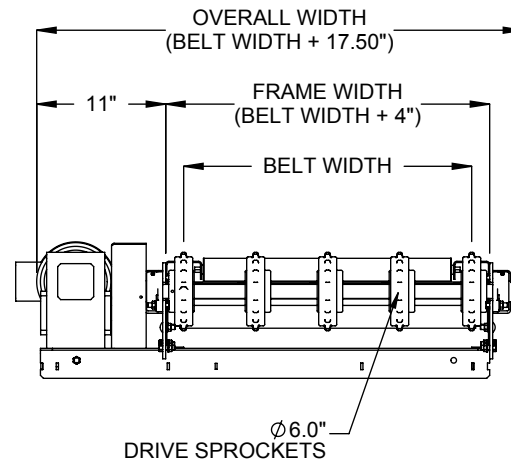
LOAD CAPACITY @ 30 FPM (LBS)					
HP	WIDTH				
	12"	18"	24"	30"	36"
1/2	1480	1410	1345	1275	1205
3/4	2300	2230	2160	2090	2025
1	3115	3045	2980	2910	2840
1 1/2	4750	4680	4615	4545	4475

MAXIMUM LOAD PER LINEAR FOOT OF CONVEYOR IS 75 POUND - NOT TO EXCEED CAPACITY ABOVE.

* HP requirements may be slightly higher for closer roll centers.

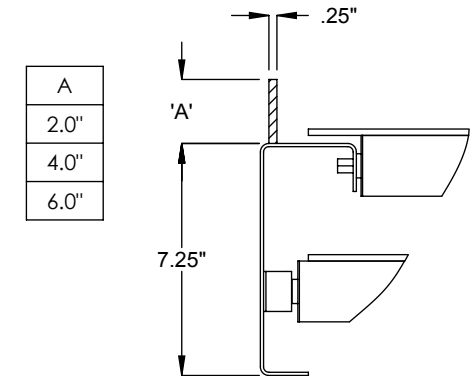


END, SIDE DRIVE OPTION



END, SIDE DRIVE
END VIEW

GUARD RAIL OPTION



1/4" WELD ON FLAT